



1000 Col. Eileen Collins Blvd.  
Syracuse, NY 13212

p – 315.454.3263  
f – 315.454.8757  
bids@syrairport.org

## **RFP #2025-07**

### **ADDENDUM #2**

**Issued 4/11/25**

#### **TABLE OF CONTENTS**

	Page
1. Instructions .....	2
2. Amendments to Contract Specifications .....	2
3. Amendments to Contract Drawings .....	2
4. Attachments .....	3

#### **Air Cargo Road Surface Parking Lot Bid Tabs**

##### **Air Cargo Road Surface Parking Lot Plans**

- C100 Drawing Sheet Index & Quantity Table
- C104 Existing Subsurface Utility Designations Survey
- C301 Demolition Plan
- C302 Offsite Demolition Plan
- C303 Site Layout Plan
- C305 Grading & Drainage Plan
- C307 Signage & Striping Plan
- C308 Offsite Signage & Striping Plan
- C309 Utility Plan
- C404 Details (4 of 4)

##### **Maintenance Surface Parking Lot Plans**

- C103 Existing Subsurface Utility Designations Survey
- C303 Grading & Drainage Plan



## 1. INSTRUCTIONS

### TO ALL HOLDERS OF CONTRACT DOCUMENTS

Your attention is directed to the following interpretations of, changes and additions to the Contract Documents for the project, “Air Cargo Road Overflow Parking Lot & Maintenance Employee Lot” at Syracuse Hancock International Airport.

This Addendum constitutes part of the Contract Documents. Should conflicts occur between the Specifications or Drawings with items in the Addendum, the Addendum shall govern. Bidders shall carefully examine all items and determine for themselves what sub-bidders are affected, and notify all bidders or sub-bidders of clarifications, interpretations, or revisions affecting their work. Work described in this Addendum shall be in accordance with specifications for like items unless stated otherwise.

## 2. AMENDMENTS TO THE CONTRACT SPECIFICATIONS

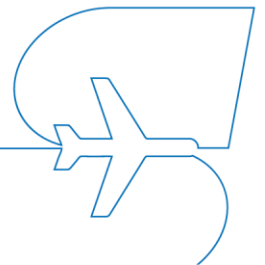
Delete Air Cargo Road Surface Parking Lot Base Bid Tab sheets 1-14 with the attached Bid Tab sheets 1-14 with updated quantities.

## 3. AMENDMENTS TO THE CONTRACT DRAWINGS

### *Air Cargo Road Surface Parking Lot*

The drawings have been updated to reflect the change in movement on Air Cargo Road to be two-way in its entirety. A ground penetrating radar study was also conducted and information collected was added to the plans.

1. Revision: C100
  - Revised sheet list table with additional sheets and corresponding sheet number changes.
  - Revised quantity table to update items associated with Air Cargo Road to be two-way.
2. Addition: C104
  - Existing subsurface utility designation survey sheet added.
3. Revision: C301
  - Revision to roadway signage and striping to be removed.
4. Addition: C302
  - Offsite demolition plan added to reflect additional demolition items associated with the conversion of Air Cargo to two-way for the entire length of the roadway.



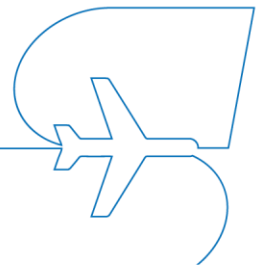
5. Revision: C303
  - Revision to roadway signage and striping.
6. Revision: C305
  - Subsurface utility depths added to the grading and drainage plan.
7. Revision: C307
  - Revision to roadway signage and striping.
8. Addition: C308
  - Offsite signage and striping plan added to reflect additional signage and striping items associated with the conversion of Air Cargo to two-way for the entire length of the roadway.
9. Revision: C309
  - Subsurface utility depths added to the utility plan. Light poles LP-1, LP-2 and LP-3 repositioned to not conflict with existing utilities.
10. Revision: C404
  - Signage table chart updated to signage changes and additions along Air Cargo Road.

#### *Maintenance Surface Parking Lot*

The drawings have been updated to reflect the information collected from a ground penetrating radar study.

1. Addition: C103
  - Existing subsurface utility designation survey sheet added.
2. Revision: C303
  - Subsurface utility depths added to the grading and drainage plan.

#### **End of Addendum #2**



## Base Bid

Item No.	Unit Quantity and Description and Unit Bid Prices		Price in Figures	
			Unit Price	Total Amount
C-105-1	1	Mobilization 3% max LS	\$ _____.	\$ _____.
		_____ LS		
		_____ LS		
M-150-1	1	Project Survey and Stakeout LS		
		_____ LS		
		_____ LS		
S-804-1	1	Access Control LS		
		_____ LS		
		_____ LS		
S-850-5.1	10	Install New LED Light Pole with Concrete Base (Single Head) EA		
		_____ EA		
		_____ EA		



## Base Bid

Item No.	Unit Quantity and Description and Unit Bid Prices		Price in Figures	
			Unit Price	Total Amount
S-850-5.2	8	Install New LED Light Pole with Concrete Base (Dual Head) EA	\$ _____.	\$ _____.
		_____		
		EA		
B-300-1	1	Bus Shelter LS	\$ _____.	\$ _____.
		_____		
		LS		
203.02	16,980	Unclassified Excavation and Disposal CY	\$ _____.	\$ _____.
		_____		
		CY		
203.03	34,390	Embankment in Place CY	\$ _____.	\$ _____.
		_____		
		CY		

## Base Bid

Item No.	Unit Quantity and Description and Unit Bid Prices		Price in Figures	
			Unit Price	Total Amount
206.0201	500	Trench and Culvert Excavation CY	\$ _____.	\$ _____.
		_____		
		_____ CY		
206.03	2,920	Conduit Excavation and Backfill including Surface Restoration LF	\$ _____.	\$ _____.
		_____		
		_____ LF		
207.2	60	Geotextile Bedding SY	\$ _____.	\$ _____.
		_____		
		_____ SY		
207.24	22,650	Geotextile Stabilization SY	\$ _____.	\$ _____.
		_____		
		_____ SY		

## Base Bid

Item No.	Unit Quantity and Description and Unit Bid Prices		Price in Figures	
			Unit Price	Total Amount
209.1003	9,460	Seed and Mulch - Temporary SY	\$ _____.	\$ _____.
		_____		
		_____ SY		
209.13	2,370	Silt Fence - Temporary LF	\$ _____.	\$ _____.
		_____		
		_____ LF		
209.1702	2	Inlet Protection - Gravel Bag EA	\$ _____.	\$ _____.
		_____		
		_____ EA		
209.1801	1,090	Rolled Erosion Control Product, Class I Type A, Short Term SY	\$ _____.	\$ _____.
		_____		
		_____ SY		

## Base Bid

Item No.	Unit Quantity and Description and Unit Bid Prices		Price in Figures	
			Unit Price	Total Amount
209.22	360	Stabilized Construction Access SY	\$ _____.	\$ _____.
		_____		
		_____ SY		
304.12	7,360	Subbase Course, Type 2 CY	\$ _____.	\$ _____.
		_____		
		_____ CY		
404.1279	2,140	Top Course Asphalt, 12.5 F9 Ton	\$ _____.	\$ _____.
		_____		
		_____ Ton		
404.2579	5,740	Binder Course Asphalt, 25 F9 Ton	\$ _____.	\$ _____.
		_____		
		_____ Ton		

## Base Bid

Item No.	Unit Quantity and Description and Unit Bid Prices		Price in Figures	
			Unit Price	Total Amount
407.0102	1,820	Bituminous Tack coat	\$ _____.	\$ _____.
		Gal		
		_____ Gal		
603.171016	2	Corrugated Aluminum End Sections, 12 inch Diameter	\$ _____.	\$ _____.
		EA		
		_____ EA		
603.171216	1	Corrugated Aluminum End Sections, 18 inch Diameter	\$ _____.	\$ _____.
		EA		
		_____ EA		
603.9812	310	Smooth Interior Corrugated Polyethylene Culvert and Stormdrain 12 inch Diameter	\$ _____.	\$ _____.
		LF		
		_____ LF		

## Base Bid

Item No.	Unit Quantity and Description and Unit Bid Prices		Price in Figures	
			Unit Price	Total Amount
603.9818	260	Smooth Interior Corrugated Polyethylene Culvert and Stormdrain 18 inch Diameter LF	\$ _____.	\$ _____.
		_____ LF		
		_____ LF		
604.300103	15	Rectangular Drainage Structure (Type A) for #3 Welded Frame LF	\$ _____.	\$ _____.
		_____ LF		
		_____ LF		
606.18	2,040	Weak-Post, Corrugated Beam Guide Rail LF	\$ _____.	\$ _____.
		_____ LF		
		_____ LF		
606.180001	320	Weak-Post, Corrugated Beam Guide Rail (Shop Curved) LF	\$ _____.	\$ _____.
		_____ LF		
		_____ LF		

## Base Bid

Item No.	Unit Quantity and Description and Unit Bid Prices		Price in Figures	
			Unit Price	Total Amount
606.23	4	Anchorage Units for Corrugated Beam Guide Railing EA	\$ _____.	\$ _____.
		_____		
		EA		
610.1401	1,000	Topsoil - Reuse On-Site Materials CY	\$ _____.	\$ _____.
		_____		
		CY		
610.1602	8,610	Turf Establishment - Lawns SY	\$ _____.	\$ _____.
		_____		
		SY		
618.7213612	26	Non-Security Bollard Fixed in Ground, w/o Light 5 to 7 in Width, Over 36 in Height EA	\$ _____.	\$ _____.
		_____		
		EA		

## Base Bid

Item No.	Unit Quantity and Description and Unit Bid Prices		Price in Figures	
			Unit Price	Total Amount
619.01	1	Basic Work Zone Traffic Control LS	\$ _____.	\$ _____.
		_____		
		_____ LS		
620.03	25	Stone Fill (Light) CY	\$ _____.	\$ _____.
		_____		
		_____ CY		
635.0103	4,030	Cleaning and Preparation of Pavement Surfaces - Lines LF	\$ _____.	\$ _____.
		_____		
		_____ LF		
635.0203	16	Cleaning and Preparation of Pavement Surfaces - Letters EA	\$ _____.	\$ _____.
		_____		
		_____ EA		



## Base Bid

Item No.	Unit Quantity and Description and Unit Bid Prices		Price in Figures	
			Unit Price	Total Amount
635.0303	4	Cleaning and Preparation of Pavement Surfaces - Symbols EA	\$ _____.	\$ _____.
		_____ EA		
645.5101	230	Ground-Mounted Sign Panels without Z-bars SF	\$ _____.	\$ _____.
		_____ SF		
645.81	45	Type A Sign Posts EA	\$ _____.	\$ _____.
		_____ EA		
646.4	39	Flexible Delineator, Single Unit, One Way on Flexible Post EA	\$ _____.	\$ _____.
		_____ EA		

## Base Bid

Item No.	Unit Quantity and Description and Unit Bid Prices		Price in Figures	
			Unit Price	Total Amount
647.31	5	Relocate Sign Panel, Sign Panel Assembly Size I EA	\$ _____.	\$ _____.
		_____ EA		
647.61	9	Remove and Dispose Signs, Ground Mounted Type A Sign Supports and Foundations EA	\$ _____.	\$ _____.
		_____ EA		
655.1003	2	Welded Frame and Rectangular Grate 3 EA	\$ _____.	\$ _____.
		_____ EA		
670.2601	2,920	Rigid Plastic Conduit, 1" LF	\$ _____.	\$ _____.
		_____ LF		

## Base Bid

Item No.	Unit Quantity and Description and Unit Bid Prices		Price in Figures	
			Unit Price	Total Amount
670.3006	1	Pullboxes 5 to 7 1/2 cubic feet, inside volume (Lighting) EA	\$ _____	\$ _____
		_____ EA		
670.7005	8,760	Single Conductor Cable LF	\$ _____	\$ _____
		_____ LF		
670.7501	2,920	No. 8 AWG Cable Installed in Duct, Conduit, or Ductbank LF	\$ _____	\$ _____
		_____ LF		
685.0101	20,080	White Epoxy Reflectorized Pavement Stripes - 15 mil LF	\$ _____	\$ _____
		_____ LF		

## Base Bid

Item No.	Unit Quantity and Description and Unit Bid Prices		Price in Figures	
			Unit Price	Total Amount
685.0201	5,460	Yellow Epoxy ReflectORIZED Pavement Stripes - 15 mil LF	\$ _____.	\$ _____.
		_____ LF		
		_____ LF		
685.2403	2	White Epoxy ReflectORIZED Pavement Symbols – 15 mil EA	\$ _____.	\$ _____.
		_____ EA		
		_____ EA		
	1	Field Change Allowance LS	\$ <u>490,000.00</u>	\$ <u>490,000.00</u>
		<i>Four hundred and ninety thousand dollars and zero cents</i>		
		_____ LS		
	1	Utility Allowance LS	\$ <u>50,000.00</u>	\$ <u>50,000.00</u>
		<i>Fifty thousand dollars and zero cents</i>		
		_____ LS		

## Base Bid

Item No.	Total Price in Words		Price in Figures	
Base Bid			\$ _____.	\$ _____.

1

Sheet List Table	
SHEET NUMBER	SHEET TITLE
C000	COVER SHEET
C100	DRAWING SHEET INDEX & QUANTITY TABLE
C101	GENERAL NOTES
C102	GENERAL PLAN
C103	EXISTING CONDITIONS SURVEY
C104	EXISTING SUBSURFACE UTILITY DESIGNATION SURVEY
C200	CONSTRUCTION SAFETY & PHASING PLAN - OVERALL
C201	CONSTRUCTION SAFETY & PHASING PLAN - WORK AREA 1
C202	CONSTRUCTION SAFETY & PHASING PLAN - WORK AREA 2
C203	CONSTRUCTION SAFETY & PHASING PLAN - WORK AREA 3
C301	DEMOLITION PLAN
C302	OFFSITE DEMOLITION PLAN
C303	SITE LAYOUT PLAN
C304	VEHICLE TURNING PLAN
C305	GRADING & DRAINAGE PLAN
C306	EROSION & SEDIMENT CONTROL PLAN
C307	SIGNAGE & STRIPING PLAN
C308	OFFSITE SIGNAGE & STRIPING PLAN
C309	UTILITY PLAN
C310	PHOTOMETRIC PLAN
C401	DETAILS (1 OF 4)
C402	DETAILS (2 OF 4)
C403	DETAILS (3 OF 4)
C404	DETAILS (4 OF 4)
ELECTRICAL SHEET LIST	
E001	ELECTRICAL NOTES AND SYMBOLS
E101	ELECTRICAL PLAN
E501	ELECTRICAL SCHEDULES AND DETAILS
E502	ELECTRICAL DETAILS
E503	ELECTRICAL DETAILS

NYSDOT STANDARD SHEET LIST		
203-02	619-04	645-03
203-05	619-10	645-11
209-01	619-11	645-12
209-03	619-12	645-14
209-05	619-302	655-01
603-02	619-304	680-03
604-02	619-308	685-01
606-07	645-01	

ESTIMATE OF QUANTITIES

Bid Item	Description Of Item	Unit	Quantity
C-105-1	Mobilization 3% max	LS	1
M-150-1	Project Survey and Stakeout	LS	1
S-804-1	Access Control	LS	1
S-850-5.1	Install New LED Light Pole with Concrete Base (Single Head)	EA	10
S-850-5.2	Install New LED Light Pole with Concrete Base (Dual Head)	EA	8
B-300-1	Bus Shelter	LS	1
203.02	Unclassified Excavation and Disposal	CY	16,980
203.03	Embankment in Place	CY	34,390
206.0201	Trench and Culvert Excavation	CY	500
206.03	Conduit Excavation and Backfill including Surface Restoration	LF	2,920
207.2	Geotextile Bedding	SY	60
207.24	Geotextile Stabilization	SY	22,650
209.1003	Seed and Mulch - Temporary	SY	9,460
209.13	Silt Fence - Temporary	LF	2,370
209.1702	Inlet Protection - Gravel Bag	EA	2
209.1801	Rolled Erosion Control Product, Class I Type A, Short Term	SY	1,090
209.22	Stabilized Construction Access	SY	360
304.12	Subbase Course, Type 2	CY	7,360
404.1279	Top Course Asphalt, 12.5 F9	Ton	2,140
404.2579	Binder Course Asphalt, 25 F9	Ton	5,740
407.0102	Bituminous Tack coat	Gal	1,820
603.171016	Corrugated Aluminum End Sections, 12 inch Diameter	EA	2
603.171216	Corrugated Aluminum End Sections, 18 inch Diameter	EA	1
603.9812	Smooth Interior Corrugated Polyethylene Culvert and Stormdrain 12 inch Diameter	LF	310
603.9818	Smooth Interior Corrugated Polyethylene Culvert and Stormdrain 18 inch Diameter	LF	260
604.300103	Rectangular Drainage Structure (Type A) for #3 Welded Frame	LF	15
606.18	Weak-Post, Corrugated Beam Guide Rail	LF	2,040
606.180001	Weak-Post, Corrugated Beam Guide Rail (Shop Curved)	LF	320
606.23	Anchorage Units for Corrugated Beam Guide Railing	EA	4
610.1401	Topsoil - Reuse On-Site Materials	CY	1,000
610.1602	Turf Establishment - Lawns	SY	8,610
618.7213612	Non-Security Bollard Fixed in Ground, w/o Light 5 to 7 in Width, Over 36 in Height	EA	26
619.01	Basic Work Zone Traffic Control	LS	1
620.83	Stone Fill (Light)	CY	25
635.0103	Cleaning and Preparation of Pavement Surfaces - Lines	LF	4,030
635.0203	Cleaning and Preparation of Pavement Surfaces - Letters	EA	16
635.0303	Cleaning and Preparation of Pavement Surfaces - Symbols	EA	4
645.5101	Ground-Mounted Sign Panels without Z-bars	SF	230
645.81	Type A Sign Posts	EA	45
646.4	Flexible Delineator, Single Unit, One Way on Flexible Post	EA	39
647.31	Relocate Sign Panel, Sign Panel Assembly Size I	EA	5
647.61	Remove and Dispose Signs, Ground Mounted Type A Sign Supports and Foundations	EA	9
655.1003	Welded Frame and Rectangular Grate 3	EA	2
670.2601	Rigid Plastic Conduit, 1"	LF	2,920
670.3006	Pullboxes 5 to 7 1/2 cubic feet, inside volume (Lighting)	EA	1
670.7005	Single Conductor Cable	LF	8,760
670.7501	No. 8 AWG Cable Installed in Duct, Conduit, or Ductbank	LF	2,920
685.0101	White Epoxy Reflectorized Pavement Stripes - 15 mil	LF	20,080
685.0201	Yellow Epoxy Reflectorized Pavement Stripes - 15 mil	LF	5,460
685.2403	White Epoxy Reflectorized Pavement Symbols - 15 mil	EA	2



Syracuse Hancock  
International Airport  
1000 Col. Eileen Collins Blvd. | Syracuse, NY |  
13202  
www.syrairport.org



McFARLAND JOHNSON

49 COURT STREET, SUITE 240  
BINGHAMTON, NY 13901

AIR CARGO ROAD  
SURFACE PARKING LOT

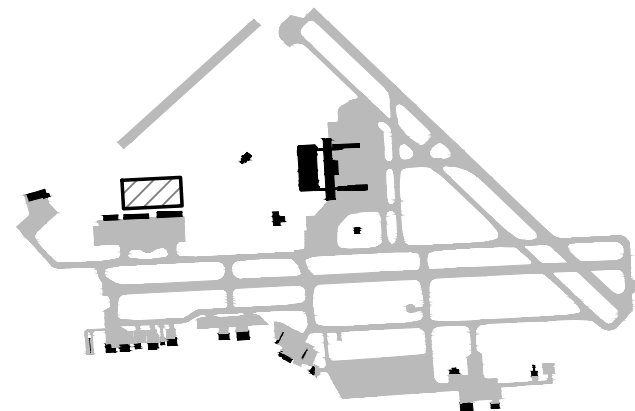
ISSUED FOR BID

DRAWING NOTES

This drawing is a planning exhibit and is not intended to serve as an Engineering document.

Syracuse Regional Airport Authority does not guarantee the accuracy of the drawing to scale. Please use caution when referencing this drawing.

All design drawings submitted to the Syracuse Regional Airport Authority must meet CAD standards set herewith.



Title DRAWING SHEET  
INDEX & QUANTITY  
TABLE

REVISIONS

No.	Revisions	Date	Initials
1	ADDENDUM #2	4/10/25	NSO

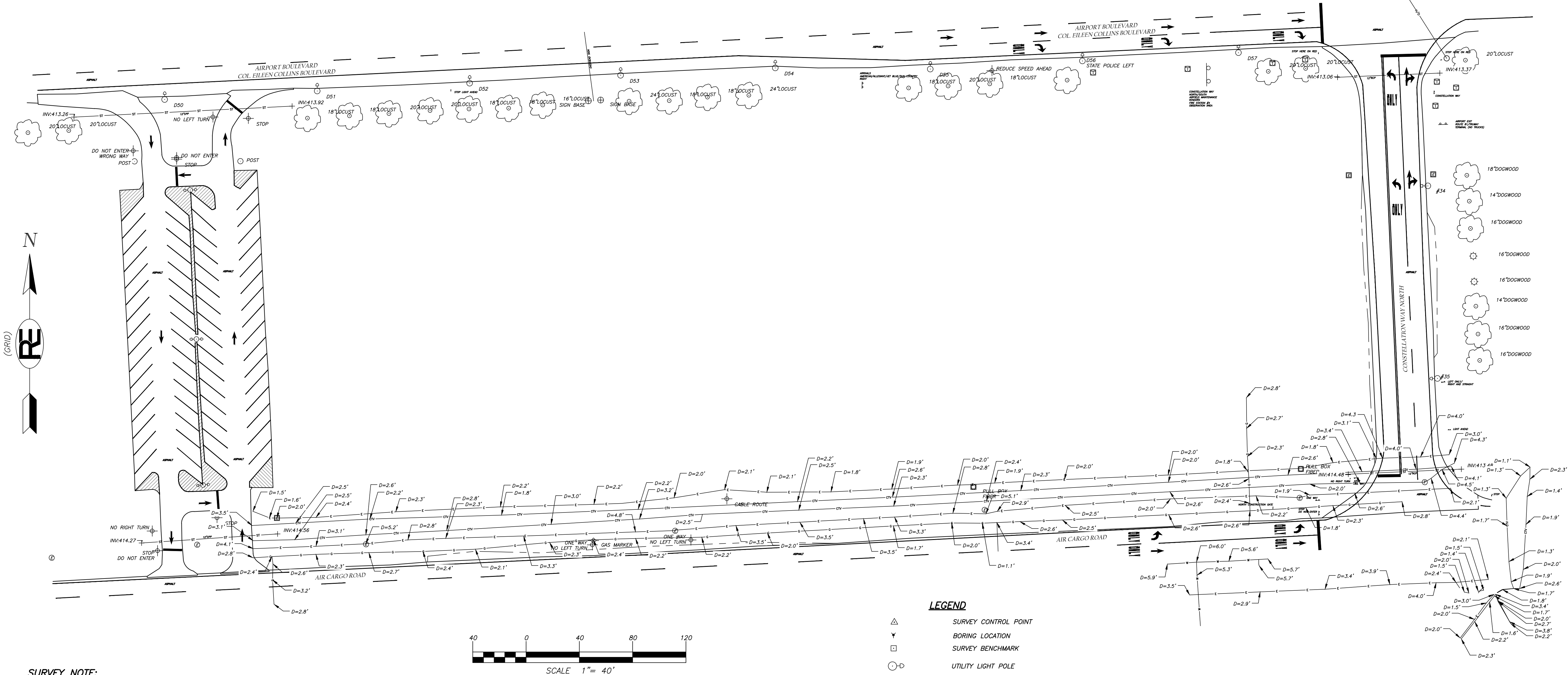
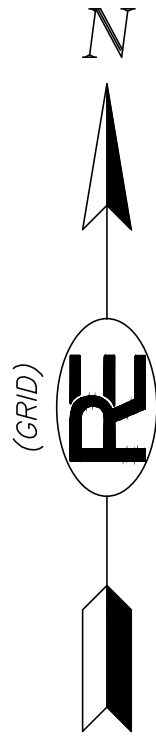
Date MARCH 2025  
Author NSO  
Project 19379.00  
Scale N.T.S.



DRAWING NUMBER

C100

1 OF 20



#### SURVEY NOTE:

1. FIELD WORK COMPLETED ON NOVEMBER 15, 2024 BY RAVI ENGINEERING AND LAND SURVEYING WITH CLEAR SITE CONDITIONS AT THE TIME OF SURVEY.

#### S.U.E. UTILITY NOTES:

1. UNDERGROUND UTILITY MARK OUT AND SURVEY COMPLETED ON MARCH 28, 2025 UNDER CLEAR CONDITIONS.
2. UTILITIES DEPICTED ON THESE PLANS ARE FROM S.U.E. STAKE OUT, UTILITY OWNER'S RECORDS SUPPLEMENT THE PLAN AS NEEDED.
3. RAVI MAKES NO GUARANTEE THAT THE UNDERGROUND UTILITIES SHOWN COMPRISE ALL SUCH UTILITIES IN THE AREA, EITHER IN SERVICE OR ABANDONED. RAVI FURTHER DOES NOT WARRANT THAT THE UNDERGROUND UTILITIES SHOWN ARE IN THE EXACT LOCATION INDICATED, ALTHOUGH WE DO CERTIFY THAT THEY ARE DESIGNATED AS ACCURATELY AS POSSIBLE FROM INFORMATION AVAILABLE.
4. WITH DUE DILIGENCE, RAVI WILL MAKE EVERY REASONABLE EFFORT TO DESIGNATE SUBSURFACE UTILITIES; HOWEVER, RAVI CANNOT GUARANTEE THAT ALL ACTIVE OR ABANDONED UTILITIES AND STRUCTURES CAN OR WILL BE DETECTED, INCLUDING BUT NOT LIMITED TO, UTILITIES LOCATED UNDERNEATH OTHER UTILITIES AND NON-CONDUCTIVE UTILITY STRUCTURES.
5. RAVI WILL NOT BE RESPONSIBLE FOR ANY UTILITY INFORMATION OUTSIDE THE AREAS DEFINED IN THIS SCOPE.
6. CLIENT SHOULD BE AWARE THAT THE EFFECTIVENESS OF GPR TO DESIGNATE THE EXISTENCE OF A SUBSURFACE UTILITY IS DEPENDENT ON THE SOIL AND GROUND WATER CONDITIONS. SOILS WITH SIGNIFICANT CLAY CONTENT AND HIGH MOISTURE CONTENT WILL ATTENUATE (ABSORB) THE GPR SIGNAL, WHICH SIGNIFICANTLY REDUCES OUR ABILITY TO IDENTIFY SUBSURFACE UTILITIES.
7. USE OF RAVI FOR SUBSURFACE UTILITY ENGINEERING (S.U.E.) DOES NOT RELIEVE THE CLIENT, CONTRACTOR(S) OR UTILITY OWNER(S) OF THE RESPONSIBILITY OF NOTIFYING DIG SAFELY NEW YORK SYSTEM PRIOR TO STARTING EXCAVATION. RAVI WILL NOT BE ASSUMED OR HELD RESPONSIBLE FOR DAMAGES TO UTILITIES CAUSED BY OTHERS.

#### S.U.E. UTILITY NOTES (CONTINUED):

8. S.U.E. FIELD WORK WAS ASSISTED BY PLANS PROVIDED BY THE UTILITY OWNERS, THE ACTUAL LOCATION OF THE UTILITIES MAY VARY. UTILITIES MAY EXIST THAT ARE NOT SHOWN ON THESE PLANS. IT IS THE RESPONSIBILITY OF THE CONTRACTOR AT TIME OF CONSTRUCTION TO IDENTIFY, VERIFY, AND SAFELY EXPOSE THE UTILITIES ON THIS PROJECT.
9. RAVI WARRANTS ONLY THAT THE SERVICES PROVIDED UNDER THIS PROPOSAL WILL MEET THE PREVAILING STANDARD OF CARE AND DOES NOT GUARANTEE THAT ALL UTILITIES CAN OR WILL BE IDENTIFIED, DETECTED OR PRECISELY MAPPED.
10. RAVI WILL NOT BE ASSUMED OR HELD RESPONSIBLE FOR DAMAGES TO UTILITIES CAUSED BY OTHERS.
11. IDENTIFYING AND MAPPING UNDERGROUND UTILITIES IS A RESULT OF GATHERING EVIDENCE AND THEREFORE EXACT UTILITY LOCATIONS ARE NOT GUARANTEED UNLESS VISUALLY EXPOSED AND SURVEYED, AND THEN ONLY AT THOSE SPECIFIC EXPOSED LOCATIONS.
12. UTILITY DEPTHS SHOWN WERE DETERMINED UTILIZING GEOPHYSICAL DEVICES AND SHOULD BE CONSIDERED APPROXIMATE. TO VERIFY SIZES, TYPES, AND DEPTHS THE SUBSURFACE UTILITIES SHOULD BE EXPOSED AND MEASURED.
13. THE SUBSURFACE UTILITIES SHOWN HEREON ARE OF QUALITY LEVEL "B" AS DEFINED BY THE AMERICAN SOCIETY OF CIVIL ENGINEERS (ASCE) IN THE "STANDARD GUIDELINES FOR THE COLLECTION AND DEPICTION OF EXISTING SUBSURFACE UTILITY DATA."

#### LEGEND

- ▲ SURVEY CONTROL POINT
- ▼ BORING LOCATION
- SURVEY BENCHMARK
- UTILITY LIGHT POLE
- UTILITY POLE
- ⊙ PEDESTRIAN LIGHT POLE
- POST
- FLAG POLE
- ✚ SIGN
- ✚ CONIFEROUS SHRUB
- ✚ TREE STUMP
- ✚ DECIDUOUS SHRUB
- ✚ DECIDUOUS TREE
- ✚ CONIFEROUS TREE
- ⊞ UTILITY ELECTRIC METER
- ⊞ UTILITY ELECTRIC MANHOLE
- ⊞ UTILITY SANITARY MANHOLE
- ⊞ UTILITY TELEPHONE MANHOLE
- ⊞ UTILITY DRAINAGE MANHOLE
- ⊞ UTILITY UNKNOWN MANHOLE
- ⊞ UTILITY DRAINAGE CATCHBASIN
- ⊞ UTILITY FIRE HYDRANT
- ⊞ BORING
- ⊞ TEST PIT
- ⊞ MONITORING WELL
- ⊞ UTILITY WATER VALVE
- ⊞ UTILITY GAS VALVE
- ⊞ UTILITY UNKNOWN VALVE

#### LEGEND

- E — UTILITY UNDERGROUND ELECTRIC
- G — UTILITY UNDERGROUND GAS MAIN
- T — UTILITY UNDERGROUND TELEPHONE
- SA — UTILITY SANITARY SEWER
- ST — UTILITY STORM SEWER
- STM — UTILITY STEAM
- W — UTILITY UNDERGROUND WATER MAIN
- FO — UTILITY UNDERGROUND FIBER OPTICS
- OE — UTILITY OVERHEAD ELECTRIC WIRES
- O/H — UTILITY OVERHEAD WIRES

NO.	REVISION	DATE

COPYRIGHT © 2025 RAVI ENGINEERING & LAND SURVEYING, P.C.  
IT IS A VIOLATION OF NEW YORK EDUCATION LAW §202.2 FOR ANY PERSON TO REPRODUCE, TRANSMIT, OR IN ANY MANNER, TO ANY OTHER PERSON, ANY INFORMATION CONTAINED HEREIN, WITHOUT THE WRITTEN PERMISSION OF RAVI ENGINEERING & LAND SURVEYING, P.C. ANY ALTERATION OF THE PLANS SHALL BE AT THE USER'S SOLE RISK. NEW YORK EDUCATION LAW §202.2 NOTATION: ALTERED BY: FOLLOWED BY HIS OR HER SIGNATURE AND SPECIFIC DESCRIPTION OF THE ALTERATIONS.

**RAVI ENGINEERING & LAND SURVEYING, P.C.**  
2110 South Clinton Avenue, Suite 1  
Rochester, NY 14618  
NYS Certificate of Authority Engineering: 21104 Surveying: 20790  
TEL (585) 223-3660 FAX: (585) 687-1764

PROJECT MANAGER  
KIEL ROEGER  
MAPPING BY  
JFF  
SCALE  
1" = 40'

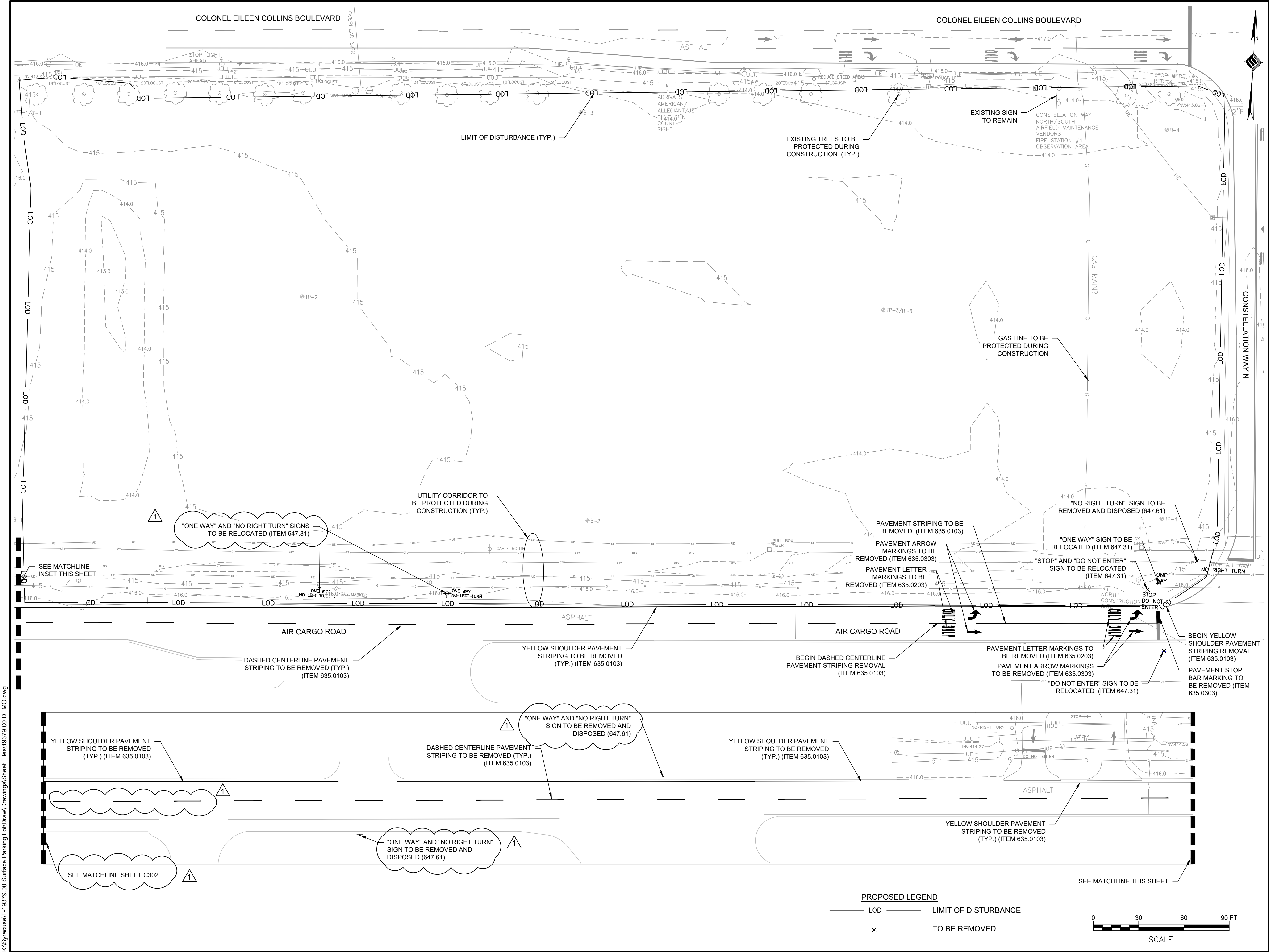
HANCOCK INTERNATIONAL AIRPORT  
SUBSURFACE UTILITY DESIGNATION SURVEY  
SRAA AIR CARGO ROAD AND MAINTENANCE  
CAMPUS PARKING LOTS  
TOWN OF DEWITT ~ ONONDAGA COUNTY ~ STATE OF NEW YORK

PROJECT #  
20-24-268

ISSUE DATE:  
APR. 3, 2025

SHEET 1 OF 2





Syracuse Hancock  
International Airport  
1000 Col. Eileen Collins Blvd. | Syracuse, NY | 13202  
www.syrairport.org



McFARLAND JOHNSON  
49 COURT STREET, SUITE 240  
BINGHAMTON, NY 13901

## AIR CARGO ROAD SURFACE PARKING LOT

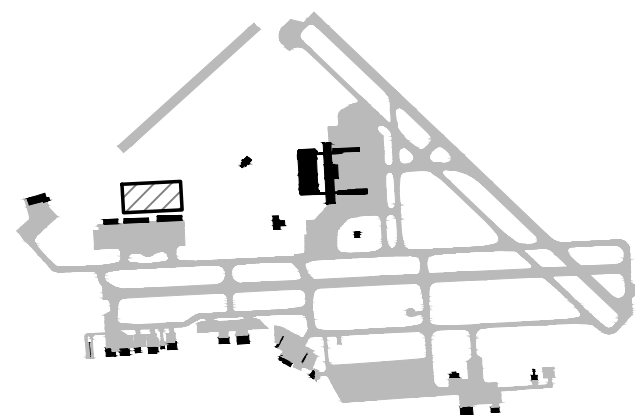
ISSUED FOR BID

### DRAWING NOTES

This drawing is a planning exhibit and is not intended to serve as an Engineering document.

Syracuse Regional Airport Authority does not guarantee the accuracy of the drawing to scale. Please use caution when referencing this drawing.

All design drawings submitted to the Syracuse Regional Airport Authority must meet CAD standards set herewith.



Title

DEMOLITION PLAN

### REVISIONS

No.	Revisions	Date	Initials
1	ADDENDUM #2	4/10/25	NSO

Date MARCH 2025  
Author NSO  
Project 19379.00  
Scale 1" = 30'

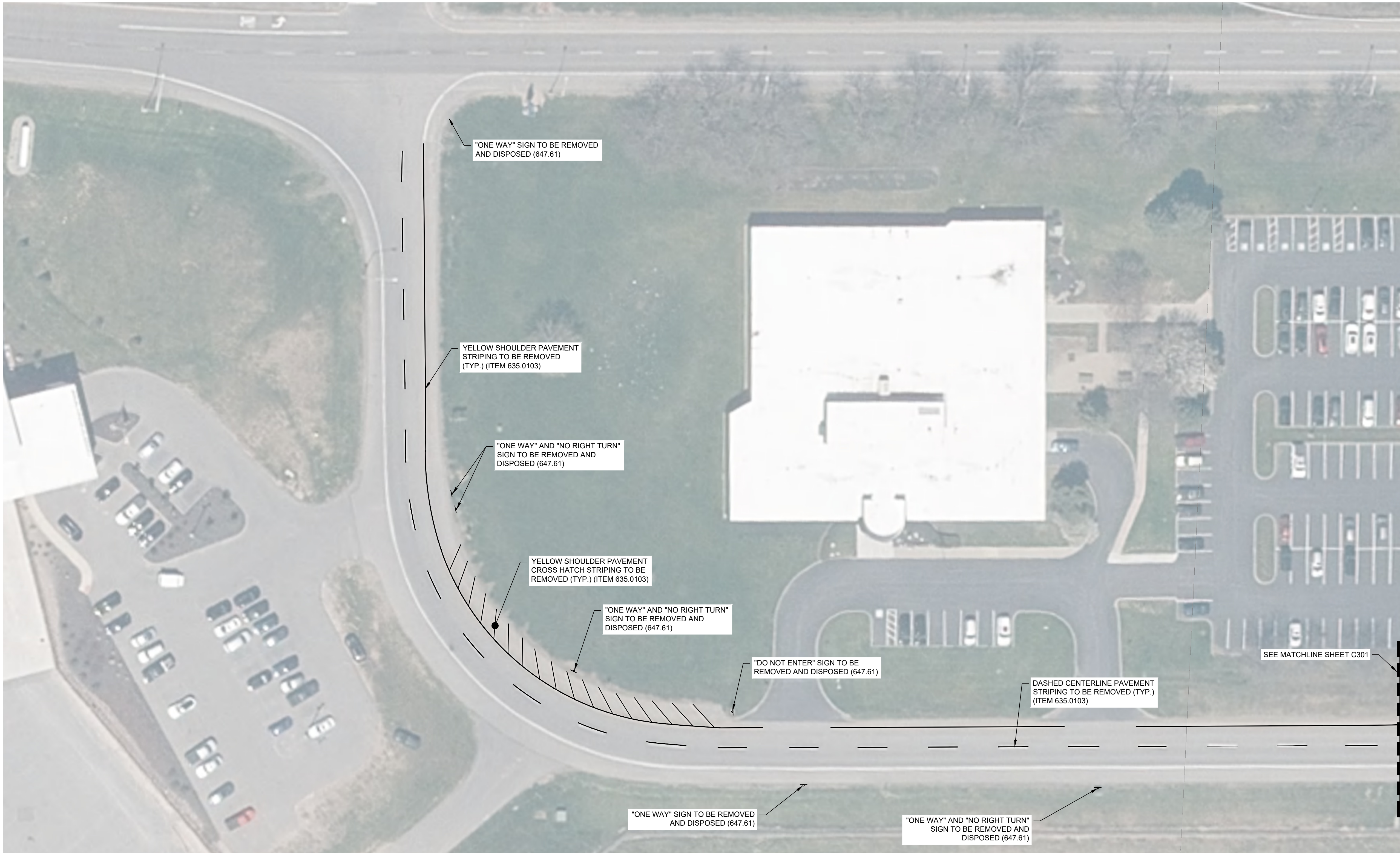


DRAWING NUMBER

C301

10 OF 20





"ONE WAY" SIGN TO BE REMOVED AND DISPOSED (647.61)

"ONE WAY" AND "NO RIGHT TURN" SIGN TO BE REMOVED AND DISPOSED (647.61)

NOTE:  
1. SEE SHEET C404 FOR PROPOSED SIGNAGE CHART AND DETAILS.

LEGEND:

- PROPOSED SIGN
- EXISTING SIGN
- S-X SIGN DATA NUMBER



Syracuse Hancock International Airport  
1000 Col. Eileen Collins Blvd. | Syracuse, NY | 13202  
www.syrairport.org



McFARLAND JOHNSON  
49 COURT STREET, SUITE 240  
BINGHAMTON, NY 13901

AIR CARGO ROAD  
SURFACE PARKING LOT

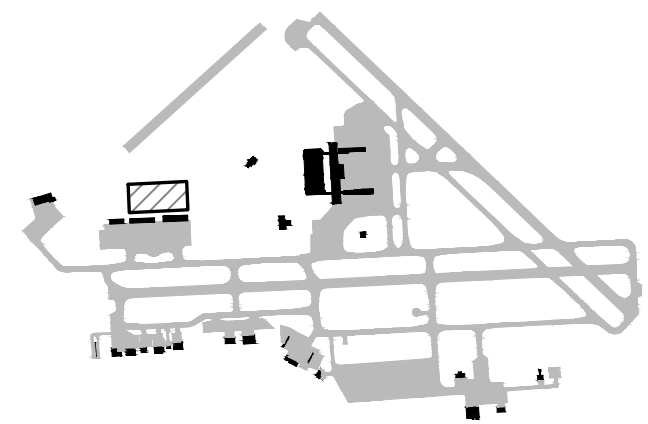
ISSUED FOR BID

DRAWING NOTES

This drawing is a planning exhibit and is not intended to serve as an Engineering document.

Syracuse Regional Airport Authority does not guarantee the accuracy of the drawing to scale. Please use caution when referencing this drawing.

All design drawings submitted to the Syracuse Regional Airport Authority must meet CAD standards set herewith.



Title  
OFFSITE DEMOLITION  
PLAN

REVISIONS

No.	Revisions	Date	Initials
1	ADDENDUM #2	4/10/25	NSO

Date MARCH 2025  
Author NSO  
Project 19379.00  
Scale 1" = 30'



DRAWING NUMBER

C302

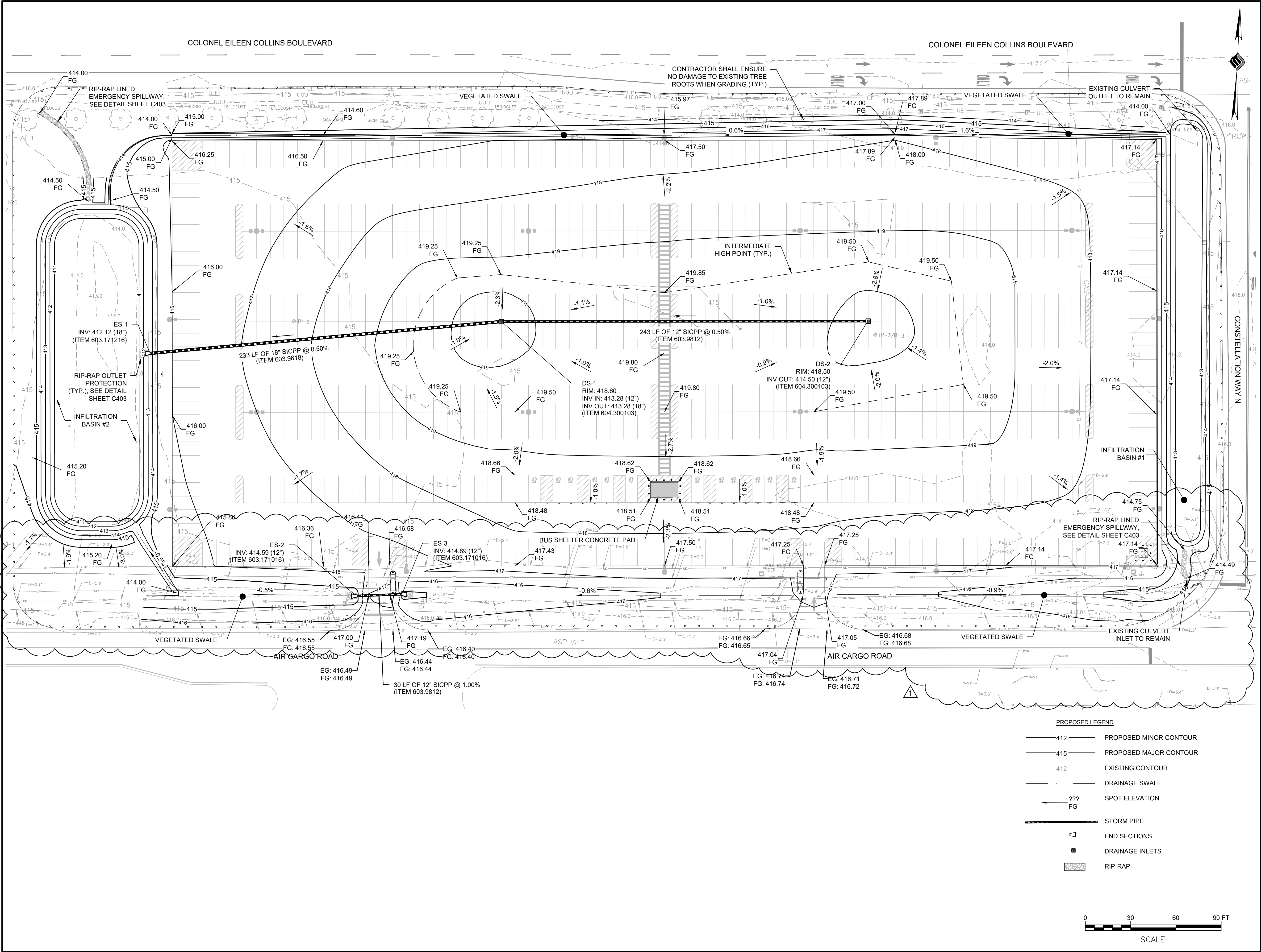
11 OF 20







K:\Syracuse\T-19379.00 Surface Parking Lot\Drawings\Sheet Files\19379.00 GRAD.dwg



Syracuse Hancock  
International Airport  
1000 Col. Eileen Collins Blvd. | Syracuse, NY |  
13202  
www.syrairport.org



McFARLAND JOHNSON  
49 COURT STREET, SUITE 240  
BINGHAMTON, NY 13901

## AIR CARGO ROAD SURFACE PARKING LOT

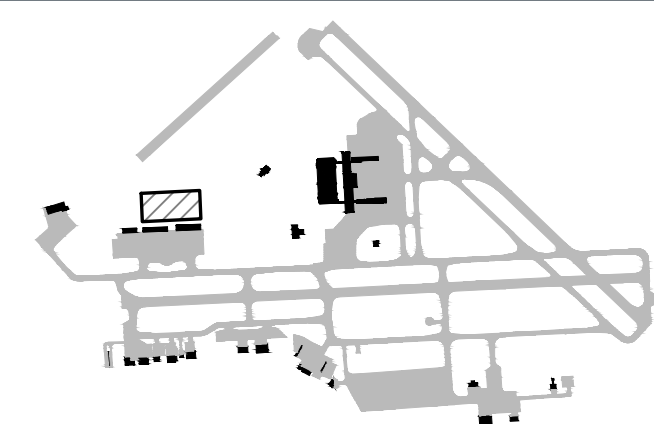
ISSUED FOR BID

### DRAWING NOTES

This drawing is a planning exhibit and is not intended to serve as an Engineering document.

Syracuse Regional Airport Authority does not guarantee the accuracy of the drawing to scale. Please use caution when referencing this drawing.

All design drawings submitted to the Syracuse Regional Airport Authority must meet CAD standards set herewith.



### Title GRADING & DRAINAGE PLAN

### REVISIONS

No.	Revisions	Date	Initials
1	ADDENDUM #2	4/10/25	NSO

Date MARCH 2025  
Author NSO  
Project 19379.00  
Scale 1" = 30'



### DRAWING NUMBER

C305

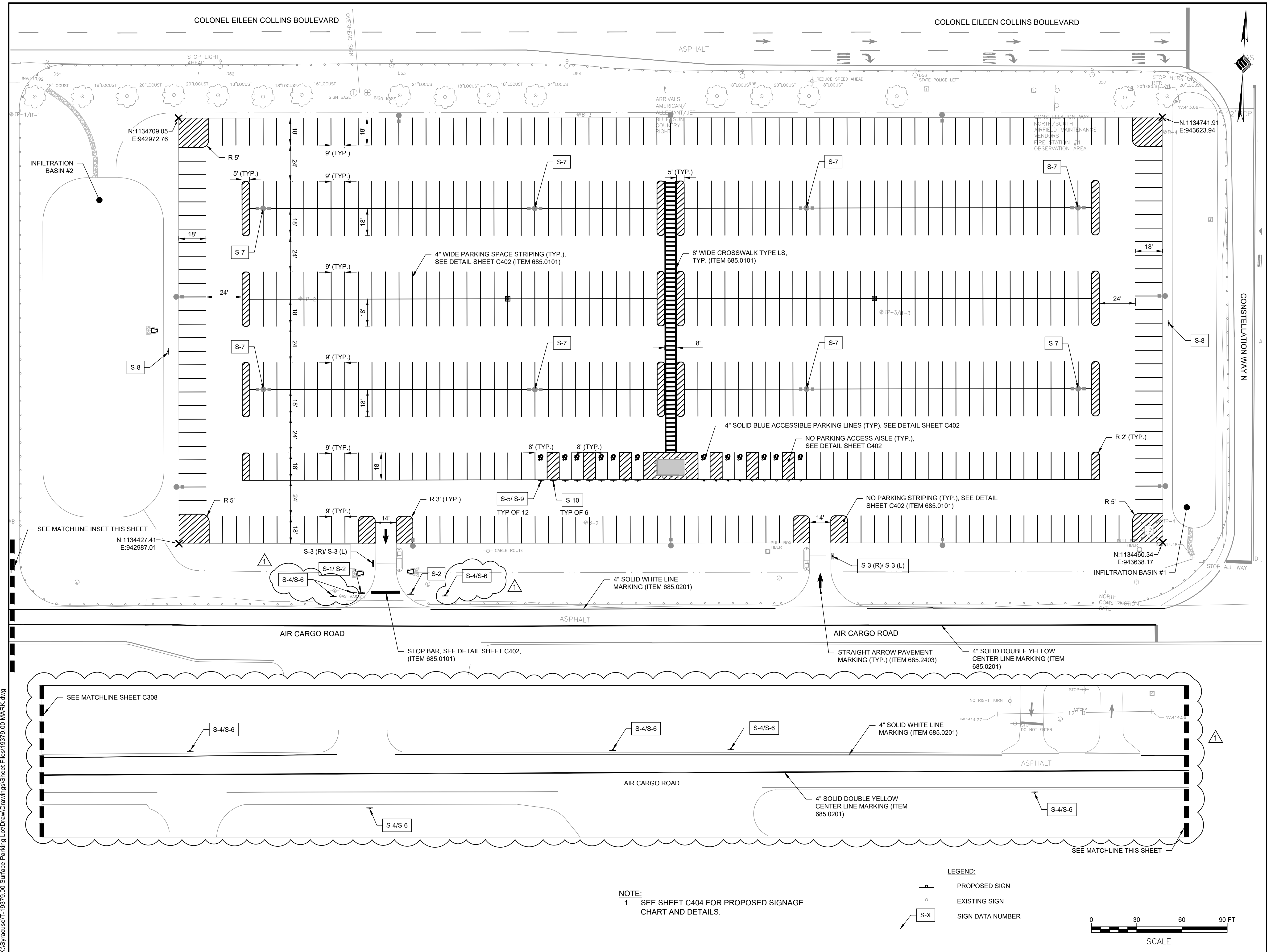
14 OF 20

#### PROPOSED LEGEND

- 412 — PROPOSED MINOR CONTOUR
- 415 — PROPOSED MAJOR CONTOUR
- - - 412 - - - EXISTING CONTOUR
- — — DRAINAGE SWALE
- ← ??? FG SPOT ELEVATION
- — — STORM PIPE
- ◁ END SECTIONS
- DRAINAGE INLETS
- ▨ RIP-RAP







Syracuse Hancock  
International Airport  
1000 Col. Eileen Collins Blvd. | Syracuse, NY |  
13202  
[www.syrairport.org](http://www.syrairport.org)



**McFARLAND JOHNSON**  
49 COURT STREET; SUITE 240  
BINGHAMTON, NY 13901

AIR CARGO ROAD  
SURFACE PARKING LOT

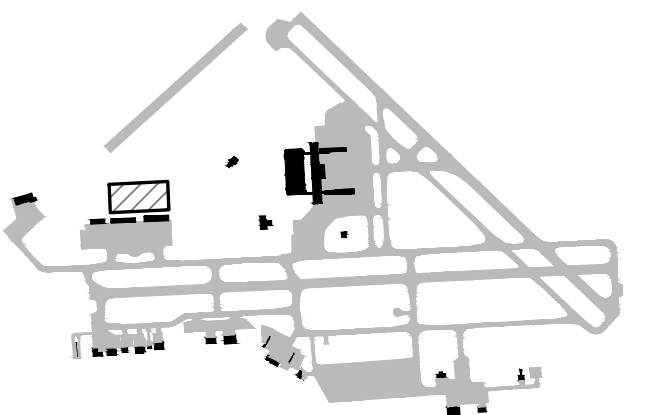
ISSUED FOR BID

## DRAWING NOTES

This drawing is a planning exhibit and is not intended to serve as an Engineering document.

Syracuse Regional Airport Authority does not guarantee the accuracy of the drawing to scale. Please use caution when referencing this drawing.

All design drawings submitted to the Syracuse Regional Airport Authority must meet CAD standards set herewith.



Title            **SIGNAGE & STRIPING  
PLAN**

## REVISIONS

No.	Revisions	Date	Initials
1	ADDENDUM #2	4/10/25	NSO

Date MARCH 2025  
Author NSO  
Project 19379.00  
Scale 1" = 30'

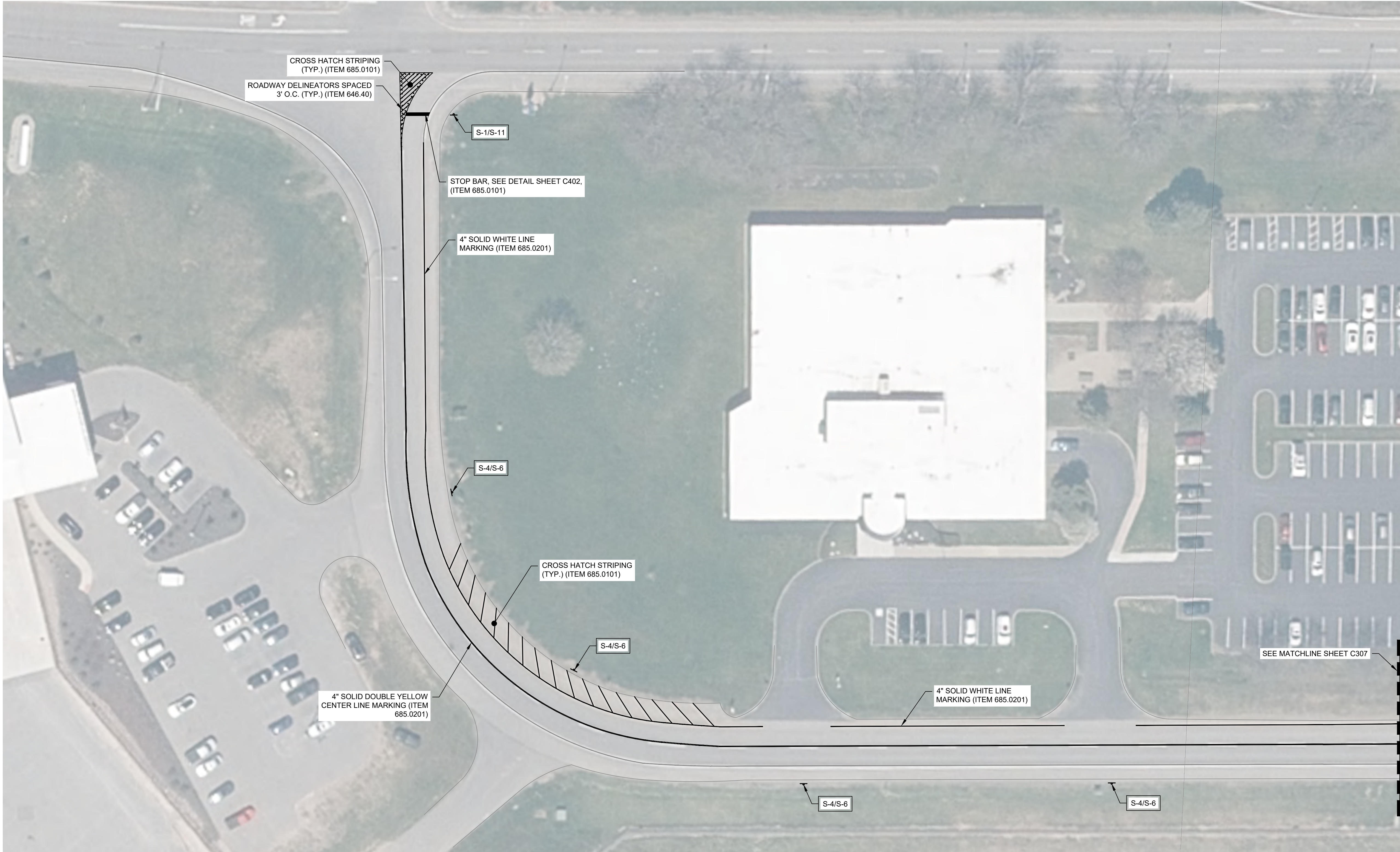


DRAWING NUMBER

C307

6 OF 20





CROSS HATCH STRIPING  
(TYP.) (ITEM 685.0101)  
ROADWAY DELINEATORS SPACED  
3' O.C. (TYP.) (ITEM 646.40)

S-1/S-11

STOP BAR, SEE DETAIL SHEET C402,  
(ITEM 685.0101)

4" SOLID WHITE LINE  
MARKING (ITEM 685.0201)

S-4/S-6

CROSS HATCH STRIPING  
(TYP.) (ITEM 685.0101)

S-4/S-6

4" SOLID DOUBLE YELLOW  
CENTER LINE MARKING (ITEM  
685.0201)

4" SOLID WHITE LINE  
MARKING (ITEM 685.0201)

SEE MATCHLINE SHEET C307

S-4/S-6

S-4/S-6

NOTE:  
1. SEE SHEET C404 FOR PROPOSED SIGNAGE  
CHART AND DETAILS.

LEGEND:

- PROPOSED SIGN
- EXISTING SIGN
- S-X SIGN DATA NUMBER



Syracuse Hancock  
International Airport  
1000 Col. Eileen Collins Blvd. | Syracuse, NY |  
13202  
www.syrairport.org



McFARLAND JOHNSON  
49 COURT STREET, SUITE 240  
BINGHAMTON, NY 13901

AIR CARGO ROAD  
SURFACE PARKING LOT

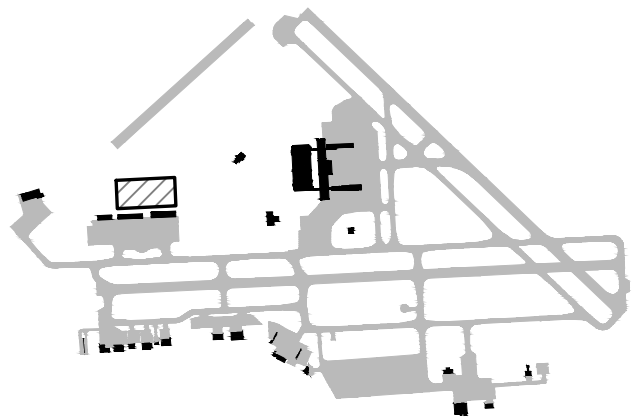
ISSUED FOR BID

DRAWING NOTES

This drawing is a planning exhibit and is not intended to  
serve as an Engineering document.

Syracuse Regional Airport Authority does not guarantee  
the accuracy of the drawing to scale. Please use  
caution when referencing this drawing.

All design drawings submitted to the Syracuse Regional  
Airport Authority must meet CAD standards set herewith.



Title  
OFFSITE SIGNAGE &  
STRIPING PLAN

REVISIONS

No.	Revisions	Date	Initials
1	ADDENDUM #2	4/10/25	NSO

Date MARCH 2025  
Author NSO  
Project 19379.00  
Scale 1" = 30'

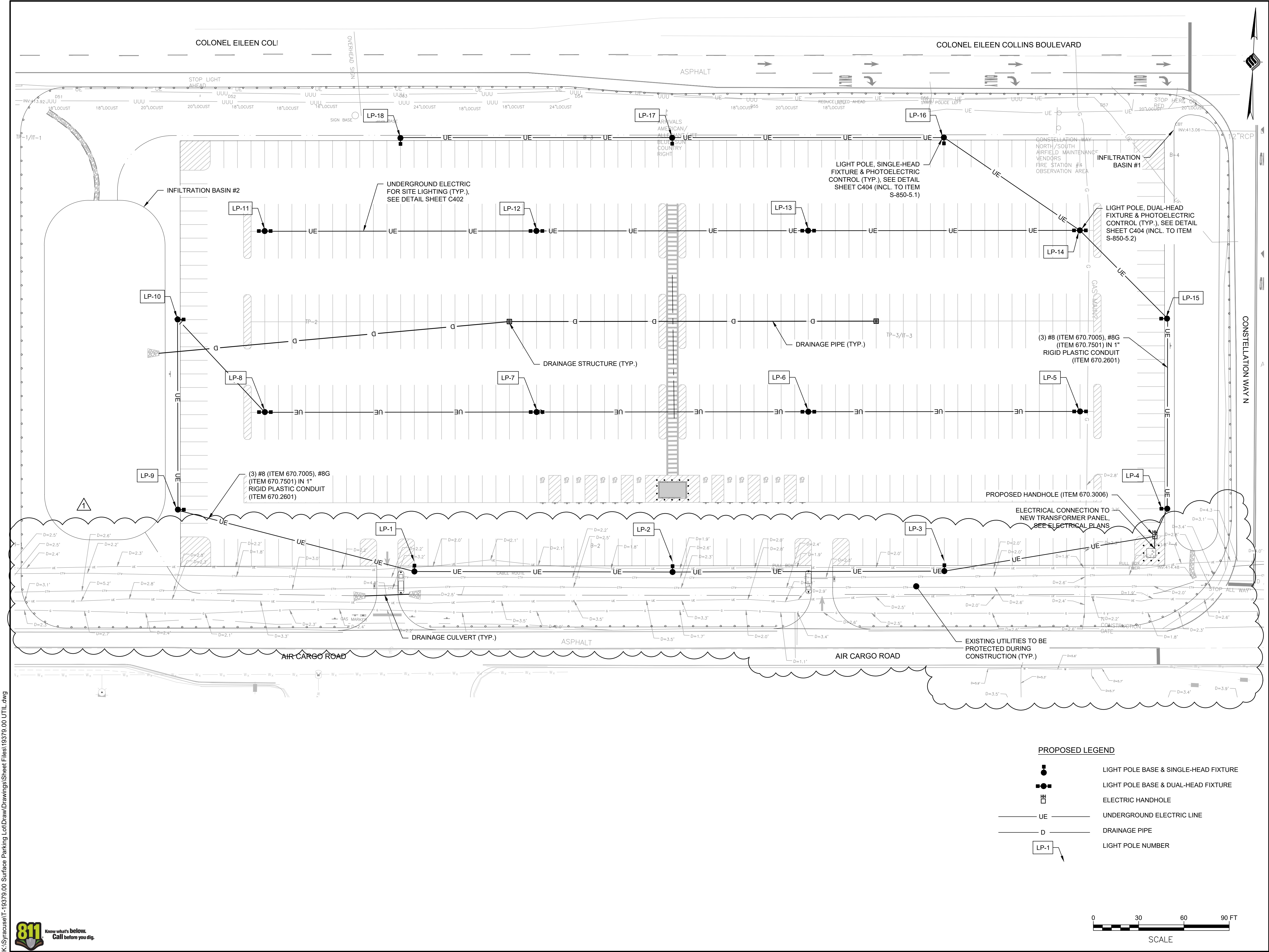


DRAWING NUMBER

C308

17 OF 20





Syracuse Hancock International Airport  
1000 Col. Eileen Collins Blvd. | Syracuse, NY | 13202  
www.syrairport.org



## AIR CARGO ROAD SURFACE PARKING LOT

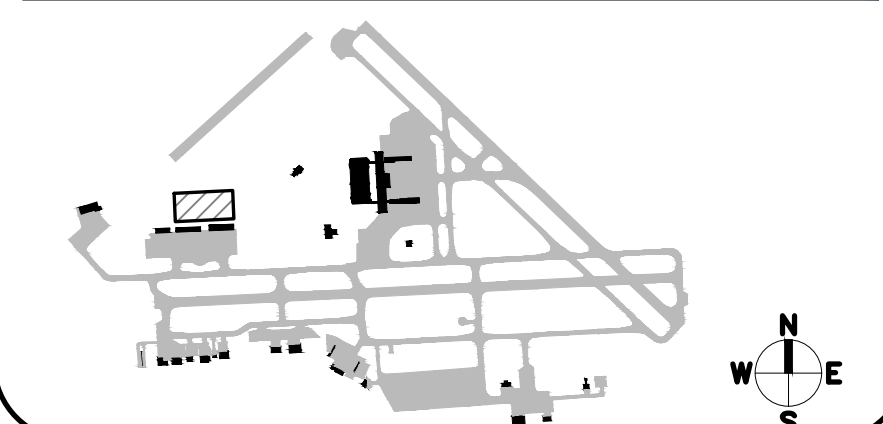
ISSUED FOR BID

### DRAWING NOTES

This drawing is a planning exhibit and is not intended to serve as an Engineering document.

Syracuse Regional Airport Authority does not guarantee the accuracy of the drawing to scale. Please use caution when referencing this drawing.

All design drawings submitted to the Syracuse Regional Airport Authority must meet CAD standards set herewith.



### Title

## UTILITY PLAN

REVISIONS			
No.	Revisions	Date	Initials
1	ADDENDUM #2	4/10/25	NSO

DateMARCH 2025

AuthorNSO

Project19379.00

Scale1" = 30'

DRAWING NUMBER

C309

18 OF 20



K:\Syracuse\T-19379.00 Surface Parking Lot\Drawings\Sheet Files\19379.00 DETS.dwg

PROPOSED SIGNS							
SIGN NO.	PANEL/POST ITEM NUMBER	NO. OF PANELS/POSTS	TOTAL QUANTITY	TEXT	WxH (INCHES)	MUTCD NO.	TYPE OF BRACE
S-1	645.5102	2	12.5 SF		30 X 30	R1-1	TYPE A
	645.81	2	2 EA				
S-2	645.5102	2	12.5 SF		30 X 30	R5-1	TYPE B
	645.81	2	2 EA				
S-3 (R)	645.5101	2	10 SF		12 X 36	R6-1	TYPE C
	645.81	1	1 EA				
S-3 (L)	645.5101	2	10 SF		12 X 36	R6-1	TYPE C
	645.81	1	1 EA				
S-4	645.5101	12	48 SF		24 X 24	M1-1	TYPE C
	645.81	12	12 EA				
S-5	645.5101	12	12 SF		12 X 18	R7-8	TYPE E
	645.81	12	12 EA				
S-6	645.5101	12	26.25 SF		21 X 15	M6-1	TYPE C
	645.81	-	-				
S-7	645.5101	16	48 SF		18 X 18	SEE DETAIL THIS SHEET	-
	-	-	-				
S-8	645.5101	4	8 SF		12 x 24	SEE DETAIL THIS SHEET	TYPE F
	645.81	2	2 EA				
S-9	645.5101	12	13.4 SF		18 X 9	R7-8A	-
	-	-	-				
S-10	645.5101	6	9 SF		12 X 18	NYP1-7	TYPE E
	645.81	6	6 EA				
S-11	645.5101	1	4 SF		24 X 24	R3-2	TYPE C
	645.81	1	1 EA				

LEGEND:	
PROPOSED SIGN	
EXISTING SIGN	
SIGN DATA NUMBER	

- NOTES:
- SIGN LOCATIONS AS SHOWN ON PLANS ARE APPROXIMATE. THE CONTRACTOR SHALL INSTALL NEW SIGNS IN ACCORDANCE WITH THE M.U.T.C.D. THE ENGINEER SHALL BE CONTACTED TO DISCUSS FINAL SIGN LOCATIONS. THE CONTRACTOR SHALL REFER TO ITEM OF THE SPECS FOR MARKING THE BACK OF THE PANELS WITH THE MONTH AND YEAR OF INSTALLATION. THE CONTRACTOR SHALL ALSO APPLY A "DATE STICKER" ON ALL NEW SIGN PANELS SHOWING CONTRACT NUMBER, DATE OF INSTALLATION, AND REGION/RESIDENCY NUMBERS. THE STICKER AND THE INFORMATION TO BE PUT ON THEM WILL BE PROVIDED TO THE CONTRACTOR BY THE ENGINEER.
  - THE CONTRACTOR SHALL VERIFY SIGN PANEL WITH THE DIMENSIONS ON THE SIGN FACE LAYOUTS OF SHEETS PRIOR TO FABRICATION.

PROPOSED SIGNAGE TABLE  
NOT TO SCALE (ITEMS 645.5101 & 645.81)

**WARNING**

SWIMMING, WADING, AND SKATING IS PROHIBITED

POSSIBLE CONTAMINATION OR POLLUTION OF POND WATER

MAXIMUM POND DEPTH IS X FEET

STORMWATER MANAGEMENT PRACTICE - INFILTRATION BASIN #1

PROJECT IDENTIFICATION - SPDES CONSTRUCTION PERMIT # NYRXXXXXX

MUST BE MAINTAINED IN ACCORDANCE WITH O&M PLAN

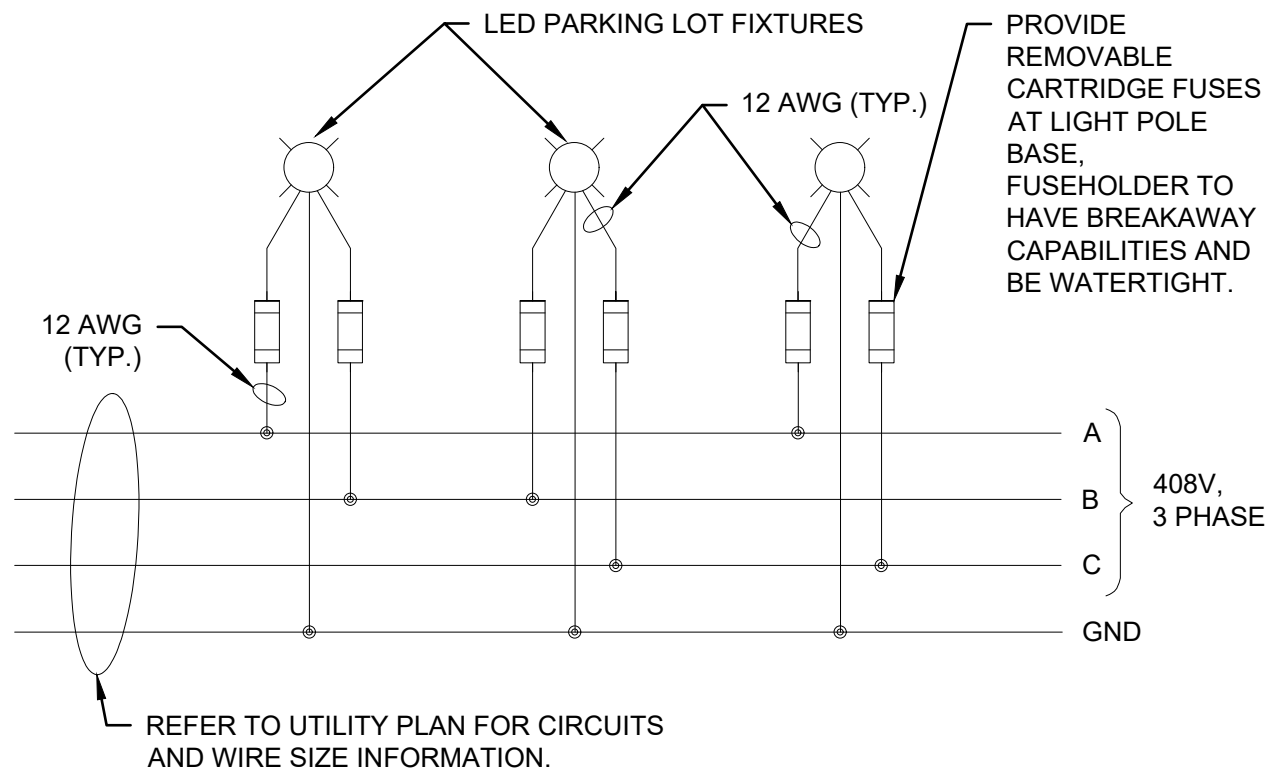
DO NOT REMOVE OR ALTER

BASIN NO.	MAX. POND DEPTH (FT)
1	3
2	4

- NOTES:
- METAL SIGNS WITH GREEN BACKGROUND AND WHITE LETTERING.
  - SIGNS SHALL BE MINIMUM OF 12" X 24".
  - SEE SITE PLAN FOR LOCATION, ORIENTATION AND QUANTITY
  - PERMIT NUMBER SHALL CORRESPOND WITH THE SPDES CONSTRUCTION PERMIT NUMBER ISSUED BY NYSDEC

SIGNAGE FOR STORMWATER PRACTICE

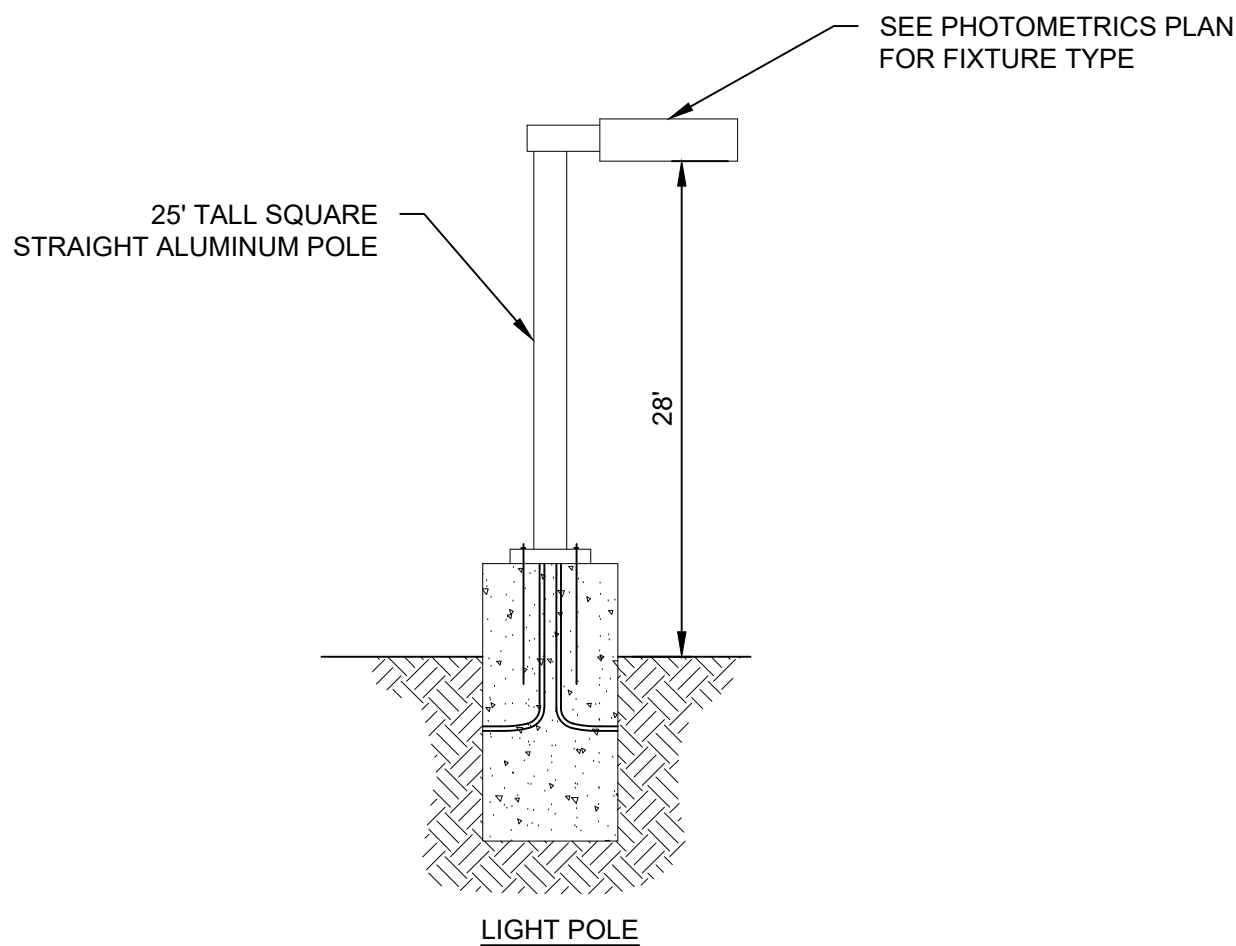
NOT TO SCALE (INCL. OF ITEM 645.5101)



- NOTE:
- BALANCE ALL LOADS ON EACH PHASE SHOWN

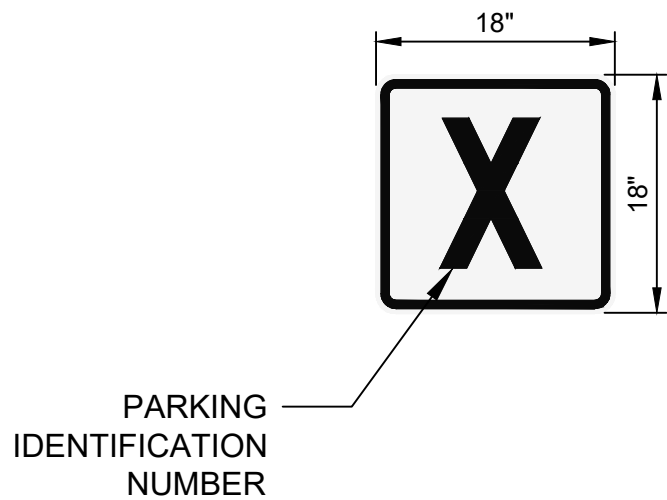
FIXTURE WIRING DIAGRAM

NOT TO SCALE



LIGHT POLE DETAIL

NOT TO SCALE (ITEMS S-850-5.1 & S-850-5.2)

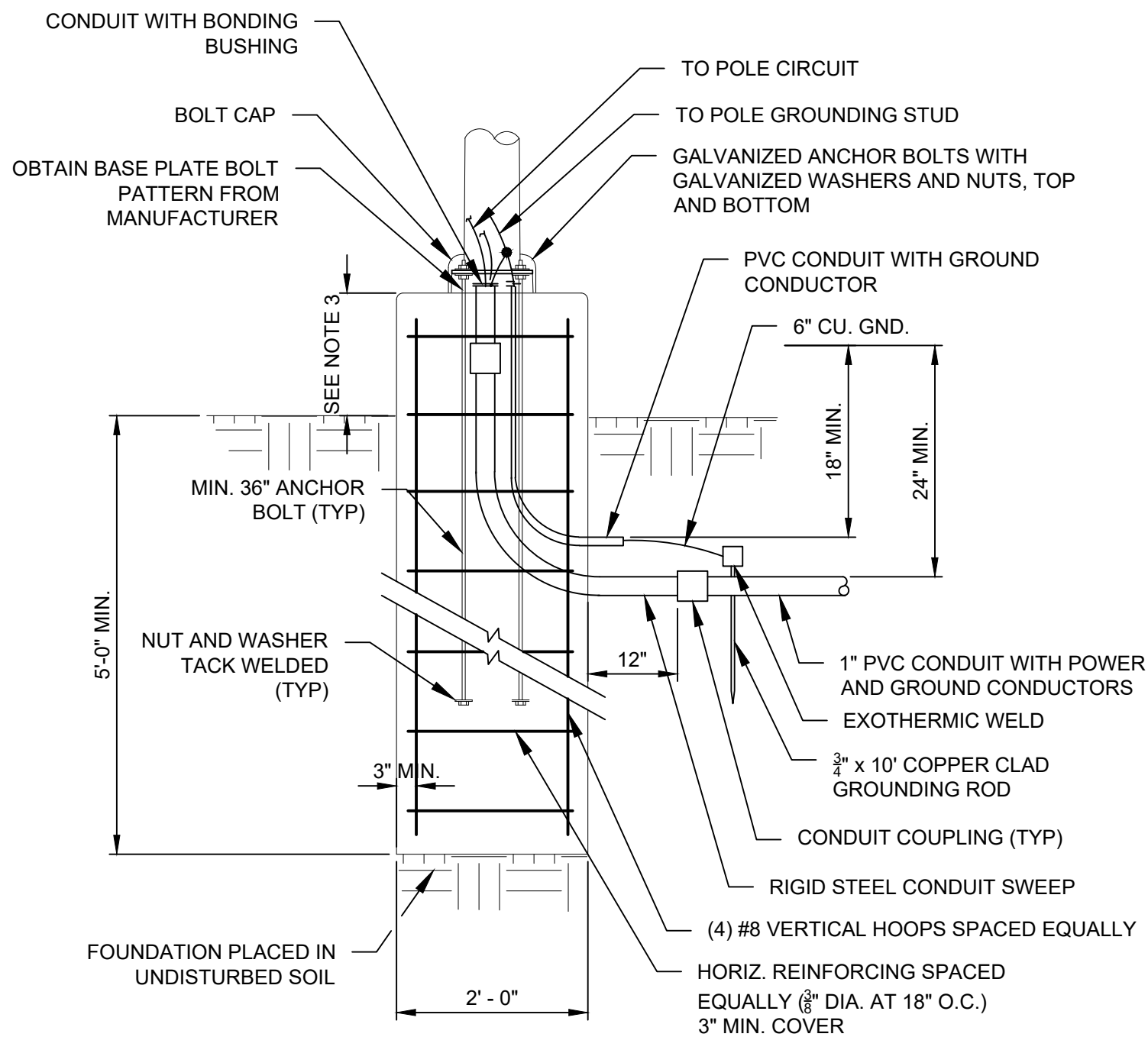


PARKING IDENTIFICATION SIGN	
WIDTH x HIGHT.	18" x 18"
BORDER WIDTH	0.63"
CORNER RADIUS	1.13"
MOUNTING	POLE MOUNTED
BACKGROUND	TYPE: REFLECTIVE COLOR: WHITE
LEGEND/BORDER	TYPE: REFLECTIVE COLOR: BLACK/BLACK

- NOTES:
- PARKING IDENTIFICATION SHALL BE NUMBERED 1 THROUGH 8. TWO (2) SIGNS OF EACH NUMBER ARE REQUIRED.
  - TWO (2) PARKING IDENTIFICATION SIGNS OF THE SAME NUMBER SHALL BE MOUNTED BACK TO BACK FACING NORTH AND SOUTH ON EACH LIGHT POLE IN THE CENTER OF THE LOT AS IDENTIFIED ON THE SITE PLAN

PARKING IDENTIFICATION SIGN

NOT TO SCALE (ITEM 645.5101)



NOTES:

- ANCHOR BOLT SIZE, QUALITY AND PATTERN SHALL BE PROVIDED IN ACCORDANCE WITH THE APPROVAL OF THE LIGHT POLE MANUFACTURER REQUIREMENTS.
- REVEAL SHALL BE 36" FOR LIGHT POLES

CONCRETE LIGHT POLE BASE DETAIL

NOT TO SCALE (ITEMS S-850-5.1 & S-850-5.2)



Syracuse Hancock International Airport  
1000 Col. Eileen Collins Blvd. | Syracuse, NY | 13202  
www.syrairport.org



McFARLAND JOHNSON  
49 COURT STREET, SUITE 240  
BINGHAMTON, NY 13901

AIR CARGO ROAD  
SURFACE PARKING LOT

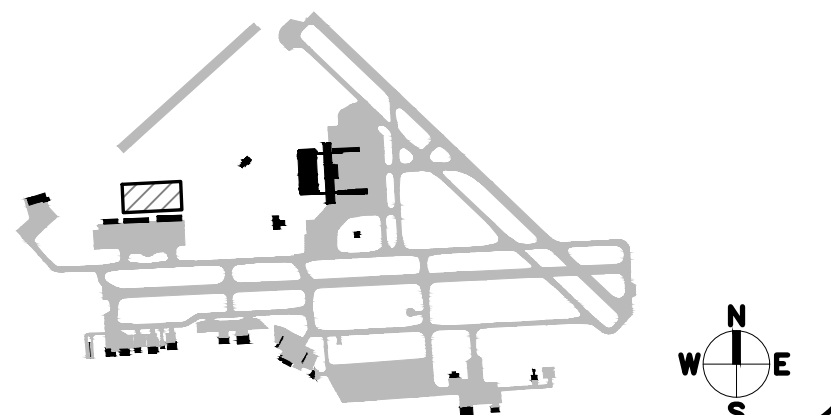
ISSUED FOR BID

DRAWING NOTES

This drawing is a planning exhibit and is not intended to serve as an Engineering document.

Syracuse Regional Airport Authority does not guarantee the accuracy of the drawing to scale. Please use caution when referencing this drawing.

All design drawings submitted to the Syracuse Regional Airport Authority must meet CAD standards set herewith.



Title

DETAILS (4 OF 4)

REVISIONS

No.	Revisions	Date	Initials
1	ADDENDUM #2	4/10/25	NSO

Date MARCH 2025  
Author NSO  
Project 19379.00  
Scale N.T.S.



DRAWING NUMBER

C404

23 OF 20





1. REMOVE AND STOCKPILE TOPSOIL AS DIRECTED BY THE OWNER'S REPRESENTATIVE. REPLACE TOPSOIL TO A MINIMUM 4" DEPTH. ALL DISTURBED AREAS TO BE HYDROSEEDING AS DIRECTED BY THE OWNER'S REPRESENTATIVE.
2. THE CONTRACTOR SHALL BE RESPONSIBLE FOR THE MAINTENANCE AND REMOVAL OF TEMPORARY SEDIMENTATION CONTROLS, INCLUDING SILT FENCE. EROSION CONTROL MEASURES SHALL NOT BE REMOVED BEFORE VEGETATION HAS OCCURRED COMPLETELY.
3. THE CONTRACTOR SHALL BE RESPONSIBLE FOR RESTORATION OF TOPSOIL TO ALL DISTURBED AREAS. IT IS THE CONTRACTOR'S RESPONSIBILITY TO MAINTAIN EROSION CONTROL MEASURES AT ALL TIMES.
4. EROSION CONTROL MEASURES WILL BE IMPLEMENTED IN ACCORDANCE WITH THE NEW YORK STATE DEPARTMENT OF ENVIRONMENTAL CONSERVATION.
5. THE CONTRACTOR SHALL BE RESPONSIBLE FOR MAINTAINING BEST MANAGEMENT PRACTICES (BMP'S) UNTIL GROUND COVER IS ESTABLISHED.
6. SILT FENCE, JUTE MESH, AND/OR EROSION CONTROL BLANKETS WILL BE USED ON STEEP SLOPES AND WHEREVER NECESSARY TO CONTROL EROSION AND SILTATION OF EXISTING DRAINAGE SYSTEMS AS ORDERED BY THE ENGINEER OR SPECIFIED ON PLANS.
7. THE CONTRACTOR SHALL DESIGNATE A MEMBER OF HIS/HER FIRM TO BE RESPONSIBLE TO MONITOR EROSION CONTROL, EROSION CONTROL STRUCTURES, TREE PROTECTION AND PRESERVATION THROUGHOUT CONSTRUCTION.
8. ALL GRADING AND EARTHWORK SHALL BE IN CONFORMANCE WITH NEW YORK STATE STANDARD SPECIFICATIONS SECTION 203 - EXCAVATION AND EMBANKMENT, WHICH INCLUDES MAXIMUM EMBANKMENT LIFT THICKNESS ALLOWED BASED ON THE COMPACTION EQUIPMENT USED.
9. ALL PROPOSED ELEVATIONS SHOWN HEREON ARE FINISHED GRADE ELEVATION.

1. SITE PREPARATION SHOULD BEGIN WITH STRIPPING OF EXISTING TOPSOIL, FILLS AND SUBSOILS FROM THE BUILDING AND PAVEMENT AREAS.
2. ANY EXISTING UNSUITABLE FILLS THAT ARE PRESENT BENEATH NEW PAVEMENT AREAS SHOULD BE REMOVED AND REPLACED IN THEIR ENTIRETY. THE GEOTECHNICAL ENGINEER SHOULD BE RETAINED TO PERFORM ONSITE OBSERVATIONS TO CONFIRM THE UNSUITABLE FILLS HAVE BEEN REMOVED.
3. PRIOR TO PLACING FILLS TO RAISE SITE GRADES AND/OR AFTER CUTS ARE MADE TO THE PLAN SUBGRADE ELEVATIONS, THE SUBGRADES SHOULD BE PROOF-ROLLED USING A STEEL DRUM ROLLER WITH A STATIC WEIGHT OF AT LEAST 10 TONS. THE ROLLER SHOULD OPERATE IN ITS VIBRATORY MODE, UNLESS REQUESTED OTHERWISE BY THE GEOTECHNICAL ENGINEER OBSERVING THE WORK, AND TRAVEL AT A SPEED NOT EXCEEDING THREE FEET PER SECOND (TWO MILES PER HOUR). THE ROLLER SHOULD COMPLETE AT LEAST TWO PASSES OVER ALL SUBGRADE SURFACES. THE METHOD OF PROOF-ROLLING MAY BE MODIFIED BY THE GEOTECHNICAL ENGINEER BASED UPON THE CONDITIONS DISCLOSED AT THE TIME OF CONSTRUCTION.
4. SOFT AREAS IDENTIFIED BY THE PROOF-ROLLING SHOULD BE INVESTIGATED TO DETERMINE THE CAUSE AND STABILIZED ACCORDINGLY. THESE INVESTIGATIONS MAY INCLUDE THE EXCAVATION OF TEST PITS. IF EXISTING FILLS OR SOFT SUBSOILS ARE FOUND AND DETERMINED TO BE UNSUITABLE BY THE GEOTECHNICAL ENGINEER, THEY SHOULD BE REMOVED AND REPLACED AS DEEMED NECESSARY.

1. NEW FILLS BENEATH PAVEMENTS SHOULD BE PLACED IN UNIFORM LOOSE LAYERS NO MORE THAN ABOUT ONE-FOOT THICK WHERE HEAVY VIBRATORY COMPACTION EQUIPMENT IS USED. SMALLER LIFTS SHOULD BE USED WHERE HAND OPERATED EQUIPMENT IS REQUIRED FOR COMPACTION. EACH LIFT SHOULD BE COMPACTED NO LESS THAN 95 PERCENT OF ITS MAXIMUM DRY DENSITY AS DETERMINED BY THE MODIFIED PROCTOR COMPACTION TEST, ASTM D1557. ON LANDSIDE AREAS, THE COMPACTION REQUIREMENT MAY BE RELAXED TO 90 PERCENT OF MAXIMUM DRY DENSITY.
2. WHERE FILLS ARE REQUIRED TO CONSTRUCT SLOPES FOR STORMWATER MANAGEMENT BASINS OR GENERAL SITE GRADING, THE FILL SHOULD BE PLACED AND COMPACTED HORIZONTALLY ABOUT TWO TO THREE FEET BEYOND THE FINAL SLOPE SURFACE. THE FILLS SHOULD THEN BE TRIMMED BACK TO ESTABLISH THE FINAL SLOPE SURFACE TO ENSURE THAT ADEQUATE COMPACTION IS ACHIEVED.
3. PERMANENT CUT SLOPES CONSISTING OF GRANULAR SITE SOILS, AND FILL SLOPES CONSTRUCTED USING STRUCTURAL FILL, SHOULD BE MADE NO STEEPER THAN ONE VERTICAL ON TWO HORIZONTAL (1V:2H). THE FINAL SLOPES SHOULD BE PROTECTED FROM EROSION USING A THICK VEGETATIVE COVER. SITE GRADING SHOULD BE DESIGNED AND SWALES PROVIDED AS REQUIRED TO DIRECT SURFACE RUNOFF AWAY FROM THE SLOPES.

