

## **ADDENDUM NO. 1**

to the Contract Documents  
for the Construction of the

### **SRAA OFFICE EXPANSION**

at

SYRACUSE HANCOCK INTERNATIONAL AIRPORT  
SYRACUSE REGIONAL AIRPORT AUTHORITY  
SYRACUSE, NEW YORK

#### **IFB REFERENCE #2021-08**

#### **TO ALL HOLDERS OF CONTRACT DOCUMENTS:**

Your attention is directed to the following interpretations of changes in and additions to the Contract Documents for the construction of the **SRAA OFFICE EXPANSION** project at the Syracuse Hancock International Airport, Syracuse, New York. This Addendum is part of the Contract Documents in accordance with the provisions of Section 20-15, Addenda and Interpretation.

#### **GENERAL:**

1. Refer to attached document for summary of responses to inquiries received.
2. The bid opening date and time has been changed.
3. The Pre-Bid Meeting will be held concurrently with the TSA Office Build-Out project.

#### **ON THE CONTRACT SPECIFICATIONS:**

1. **Advertisement** –
  - a) For Bid Date, **DELETE** “December 9, 2021” and **SUBSTITUTE THEREFORE** with “December 10, 2021”
  - b) For Pre-Bid Meeting, **DELETE** “Details on how to participate will be made available to all registered plan holders.” and **SUBSTITUTE THEREFORE** with “Prospective bidders shall meet at the Board Room CT-1113 located in the Center Terminal on the First Floor.”

2. **General Conditions** –
  - a) For all references to Deadline for Bidder Inquiries, **DELETE** “December 3, 2021” and **SUBSTITUTE THEREFORE** with “December 6, 2021”
  - b) For all references to Response To Inquiries, **DELETE** “December 7, 2021” and **SUBSTITUTE THEREFORE** with “December 8, 2021”
  - c) For all references to Bid Date, **DELETE** “December 9, 2021” and **SUBSTITUTE THEREFORE** with “December 10, 2021 at 1:30 PM”
3. Section 012900 – Payment Procedures: **DELETE** Part 1.4.B.4.a in its entirety.
4. Section 017300 – Execution: **DELETE** Parts 3.3.B and C in their entirety.
5. Section 017839 – Project Record Documents: Part 1.3.A.1 **DELETE** “Original Design was performed using AutoCAD and Revit software platforms. Record documents shall be created using AutoCAD 2010 or Revit 2011.”
6. Section 064119 – Plastic Laminate-Faced Architectural Cabinets:
  - a) Part 2.1.K.1 **DELETE** “To be selected from the manufacturer’s full range” and **SUBSTITUTE THEREFORE** “Nevamar Color: #LN6002T Kopi Susu”
  - b) **DELETE** Part 2.3.D.1 in its entirety.
7. Section 066150 – Solid Surface Fabrications: Part 2.1.A.3 **DELETE** “As indicated on Contract Drawings” and **SUBSTITUTE THEREFORE** “Corian, Color: Clam Shell, Finish: Honed”.
8. Section 096519 – Resilient Tile Flooring: Part 2.2.A **DELETE** “Provide product indicated on drawings” and **SUBSTITUTE THEREFORE**: Tandus Centiva, Style: Exotic Wood, Color: Zebrano, Item: #CEX 3301 RG, Size: 6"X48"
9. Section 096813 – Tile Carpeting: Part 2.1.A **DELETE** “Provide product indicated on drawings” and **SUBSTITUTE THEREFORE**: Patcraft, Color: 00390, Size: 12"X48", Installation Method: Ashlar.

#### **ON THE CONTRACT PLANS:**

10. **REMOVE** A-101 in its entirety, and **SUBSTITUTE THEREFORE** with attached A-101 Revision 1 dated November 23, 2021.
11. **REMOVE** A-601 in its entirety, and **SUBSTITUTE THEREFORE** with attached A-601 Revision 1 dated November 23, 2021.

**END OF ADDENDUM NO. 1**

**C&S ENGINEERS, INC.**



---

Michael W. LaMontagne, AIA  
Principal Architect

**SRAA Office Expansion**  
**Response to Inquiries**



**IFB Reference 2021-08**

Question		Response
1.	<p>Request for Clarification:</p> <p><i>Spec 035413: Please confirm the intent is to provide a minor skim coat of the existing floor.</i></p>	<p>Minor leveling of floor slab may be required for installation of new finishes.</p>
2.	<p>Request for Clarification:</p> <p><i>Spec 078100: Please provide locations of fireproofing work.</i></p>	<p>Existing structure above has spray fireproofing applied. Minor patching of the existing installation may be required after installation of new materials.</p>
3.	<p>Request for Clarification:</p> <p><i>Spec 102600: Please provide locations.</i></p>	<p>Corner guards are required at new outside corners (eight total).</p>
4.	<p>Request for Clarification:</p> <p><i>Submission requirements: Does the thumb drive need to contain the original bid form? The bid value on page #2 of bid form will not get filled out until a few minutes before time of submission, not allowing time to upload the completed final copy of bid form. Please further clarify this.</i></p>	<p>Electronic copy of bid for will be required to be submitted by the apparent low bidder within 24 hours of bid time</p>
5.	<p>Request for Clarification:</p> <p><i>A1 / AD-101: Please identify locations of temporary walls requested.</i></p>	<p>Note refers to the new walls that make up the Phase 1 work area – these may be constructed as permanent walls.</p>
6.	<p>Request for Clarification:</p> <p><i>Detail B2.A-101 shows base cabinets labeled BC30. Please provide a section through this BC30 showing any shelving, etc.</i></p>	<p>Provide one adjustable white melamine shelf in each base cabinet.</p>



C&S Architects, Engineers & Landscape Architect, PLLC.  
 499 Col. Eileen Collins Blvd.  
 Syracuse, New York 13212  
 Phone: 315-455-2000  
 Fax: 315-455-9667  
 www.cscos.com



**SRAA OFFICE EXPANSION  
 SYRACUSE HANCOCK INTERNATIONAL  
 AIRPORT  
 1000 COL EILEEN COLLINS BLVD  
 SYRACUSE, NEW YORK 13212**

1	11/23/2021	ADDENDUM #1
---	------------	-------------

MARK	DATE	DESCRIPTION
REVISIONS		

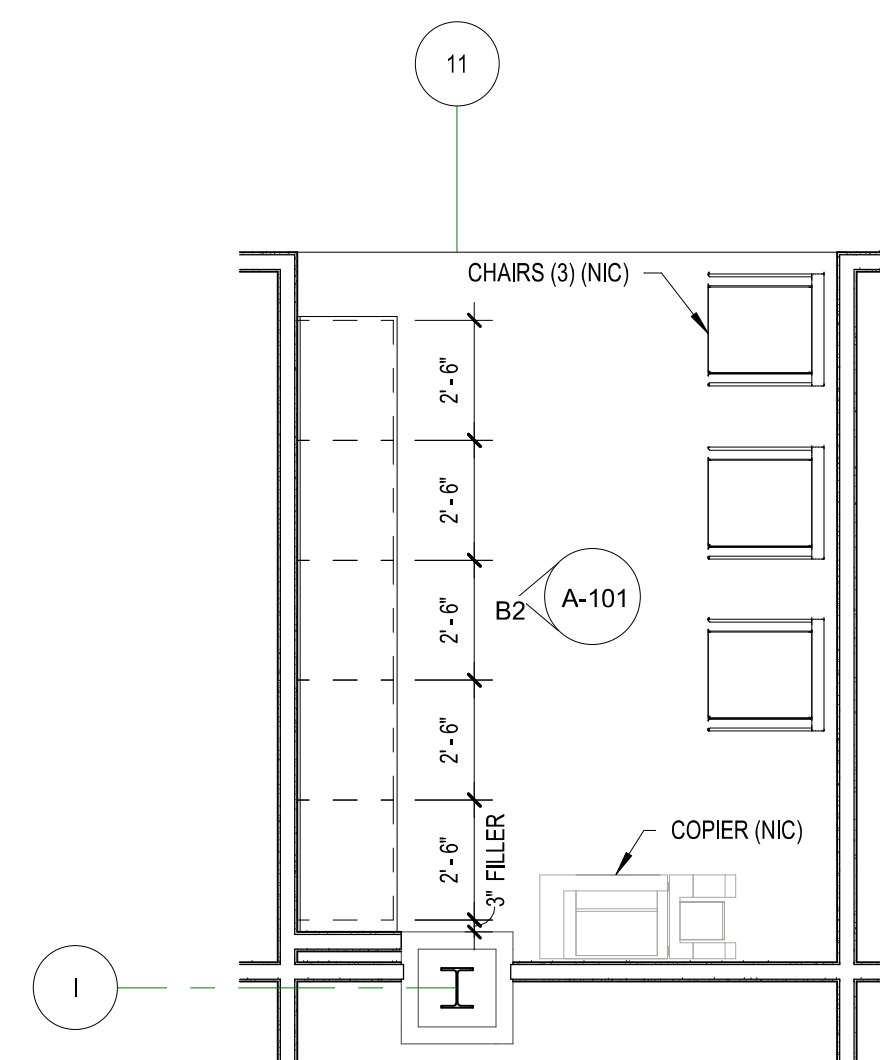
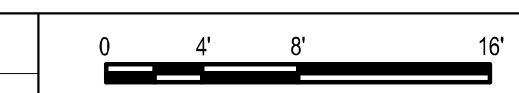
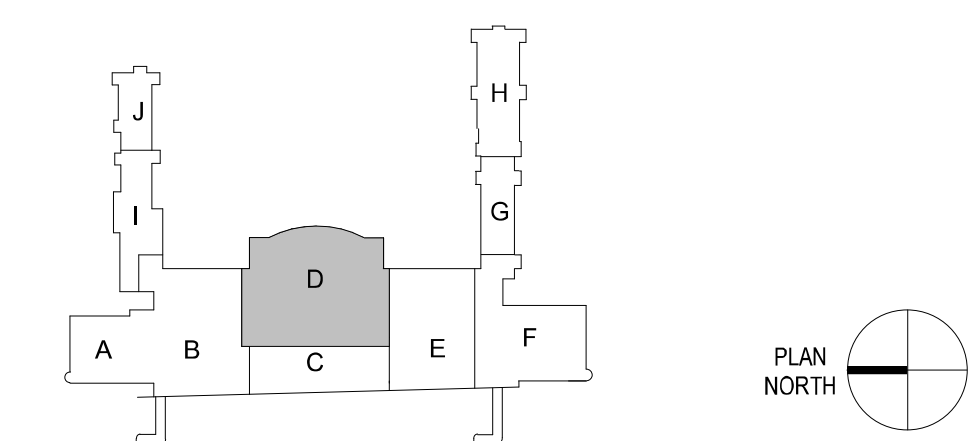
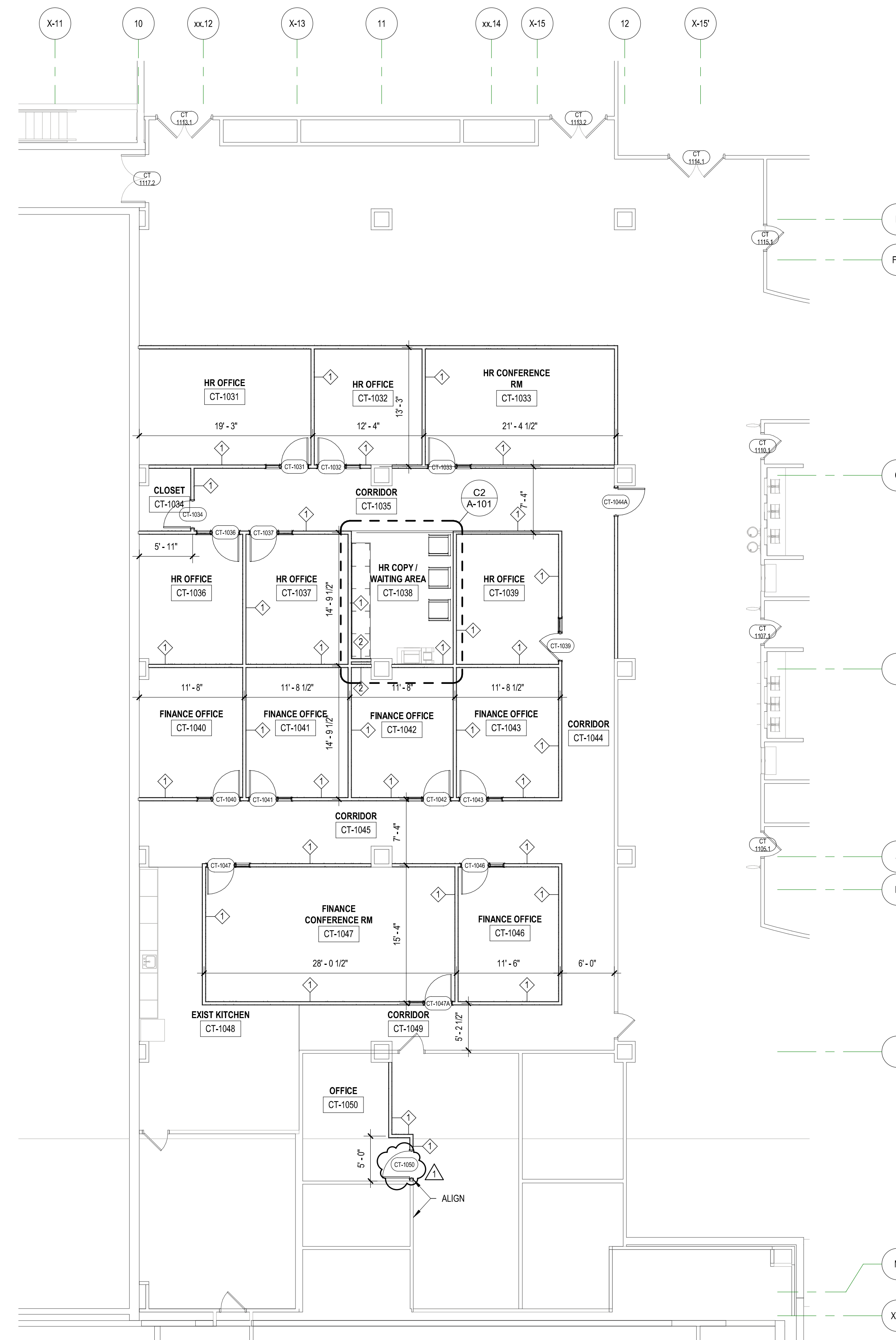
PROJECT NO:	068.055.001
DATE:	NOVEMBER 19, 2021
DRAWN BY:	K.B. PUGH
DESIGNED BY:	K.B. PUGH
CHECKED BY:	M.W. LAMONTAGNE, AIA

NO ALTERATION PERMITTED HEREON EXCEPT AS PROVIDED UNDER SECTION 7209 SUBDIVISION 2 OF THE NEW YORK EDUCATION LAW

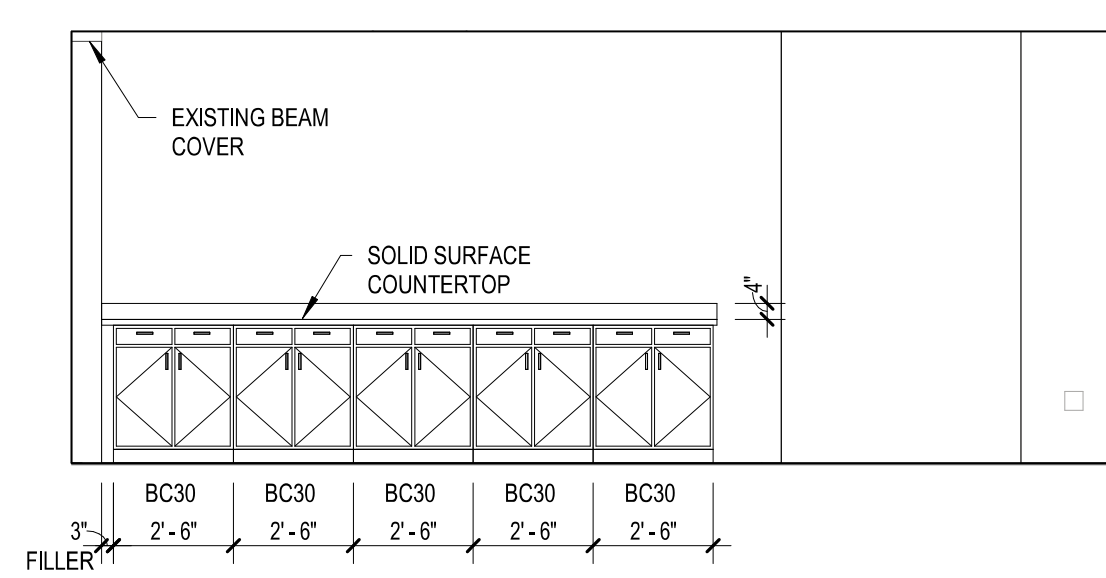
**FIRST FLOOR PLAN**

**A-101**

**A3** FIRST FLOOR PLAN  
 SCALE: 1/8" = 1'-0"



**C2** HR COPY/WAITING AREA - ENLARGED PLAN  
 SCALE: 1/4" = 1'-0"



**B2** HR COPY / WAITING AREA - ELEVATION  
 SCALE: 1/4" = 1'-0"

1

2

3

4

D

C

B

A

1

2

3

4

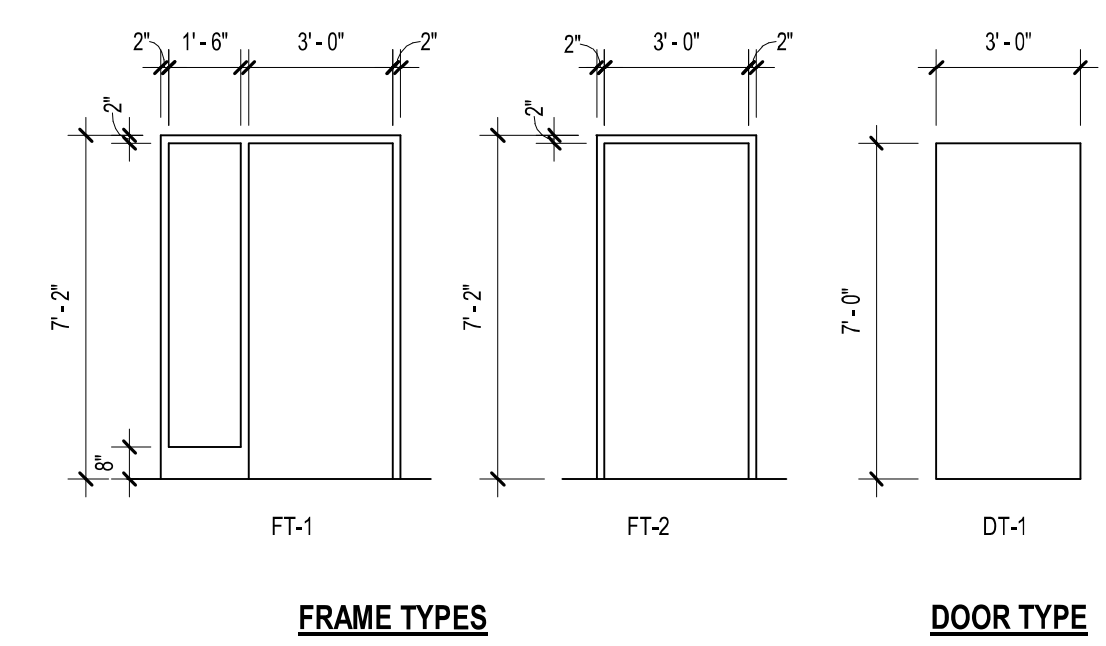
ROOM FINISH SCHEDULE										
ROOM NO.	ROOM NAME	FLOOR	BASE	WALLS				CEILING		NOTES
				NORTH	SOUTH	EAST	WEST	CEILING FINISH	CEILING HEIGHT	
CT-1031	HR OFFICE	CPT	RB	GYP BD/PT	GYP BD/PT	GYP BD/PT	GYP BD/PT	ACT-1	9'-0"	
CT-1032	HR OFFICE	CPT	RB	GYP BD/PT	GYP BD/PT	GYP BD/PT	GYP BD/PT	ACT-1	9'-0"	
CT-1033	HR CONFERENCE RM	CPT	RB	GYP BD/PT	GYP BD/PT	GYP BD/PT	GYP BD/PT	ACT-1	9'-0"	
CT-1034	CLOSET	LVT	RB	GYP BD/PT	GYP BD/PT	GYP BD/PT	GYP BD/PT	-	-	
CT-1035	CORRIDOR	CPT	RB	GYP BD/PT	GYP BD/PT	GYP BD/PT	GYP BD/PT	ACT-1	9'-0"	
CT-1036	HR OFFICE	CPT	RB	GYP BD/PT	GYP BD/PT	GYP BD/PT	GYP BD/PT	ACT-1	9'-0"	
CT-1037	HR OFFICE	CPT	RB	GYP BD/PT	GYP BD/PT	GYP BD/PT	GYP BD/PT	ACT-1	9'-0"	
CT-1038	HR COPY / WAITING AREA	CPT	RB	GYP BD/PT	GYP BD/PT	GYP BD/PT	GYP BD/PT	ACT-1	9'-0"	
CT-1039	HR OFFICE	CPT	RB	GYP BD/PT	GYP BD/PT	GYP BD/PT	GYP BD/PT	ACT-1	9'-0"	
CT-1040	FINANCE OFFICE	CPT	RB	GYP BD/PT	GYP BD/PT	GYP BD/PT	GYP BD/PT	ACT-1	9'-0"	
CT-1041	FINANCE OFFICE	CPT	RB	GYP BD/PT	GYP BD/PT	GYP BD/PT	GYP BD/PT	ACT-1	9'-0"	
CT-1042	FINANCE OFFICE	CPT	RB	GYP BD/PT	GYP BD/PT	GYP BD/PT	GYP BD/PT	ACT-1	9'-0"	
CT-1043	FINANCE OFFICE	CPT	RB	GYP BD/PT	GYP BD/PT	GYP BD/PT	GYP BD/PT	ACT-1	9'-0"	
CT-1044	CORRIDOR	CPT	RB	GYP BD/PT	GYP BD/PT	GYP BD/PT	GYP BD/PT	ACT-1	9'-0"	
CT-1045	CORRIDOR	CPT	RB	GYP BD/PT	GYP BD/PT	GYP BD/PT	GYP BD/PT	ACT-1	9'-0"	
CT-1046	FINANCE OFFICE	CPT	RB	GYP BD/PT	GYP BD/PT	GYP BD/PT	GYP BD/PT	ACT-1	9'-0"	
CT-1047	FINANCE CONFERENCE RM	CPT	RB	GYP BD/PT	GYP BD/PT	GYP BD/PT	GYP BD/PT	ACT-1	9'-0"	
CT-1048	EXIST KITCHEN	LVT	RB	GYP BD/PT	EXIST/PT-1	EXIST/PT-1	GYP BD/PT	ACT-1	9'-0"	
CT-1049	CORRIDOR	CPT	RB	GYP BD/PT	GYP BD/PT	GYP BD/PT	GYP BD/PT	ACT-1	9'-0"	
CT-1050	OFFICE	CPT	RB	GYP BD/PT	GYP BD/PT	GYP BD/PT	GYP BD/PT	ACT-1	9'-0"	

**D3 ROOM FINISH SCHEDULE**  
SCALE: NOT TO SCALE

DOOR SCHEDULE													
NUMBER	ROOM NUMBER	DOOR					FRAME				HARDWARE SET	FIRE RATING	NOTES
		TYPE	WIDTH	HEIGHT	FINISH	MATERIAL	FRAME TYPE	FRAME MATERIAL	FINISH	DEPTH			
54			3'-0"	7'-0"									
CT-1031	CT-1031	DT-1	3'-0"	7'-0"	PT	WD	FT-1	HM	PT	5 3/4"	1	--	
CT-1032	CT-1032	DT-1	3'-0"	7'-0"	PT	WD	FT-1	HM	PT	5 3/4"	1	--	
CT-1033	CT-1033	DT-1	3'-0"	7'-0"	PT	WD	FT-1	HM	PT	5 3/4"	2	--	
CT-1034	CT-1034	DT-1	3'-0"	7'-0"	PT	WD	FT-2	HM	PT	5 3/4"	3	--	
CT-1036	CT-1036	DT-1	3'-0"	7'-0"	PT	WD	FT-1	HM	PT	5 3/4"	1	--	
CT-1037	CT-1037	DT-1	3'-0"	7'-0"	PT	WD	FT-1	HM	PT	5 3/4"	1	--	
CT-1039	CT-1039	DT-1	3'-0"	7'-0"	PT	WD	FT-1	HM	PT	5 3/4"	1	--	
CT-1040	CT-1040	DT-1	3'-0"	7'-0"	PT	WD	FT-1	HM	PT	5 3/4"	1	--	
CT-1041	CT-1041	DT-1	3'-0"	7'-0"	PT	WD	FT-1	HM	PT	5 3/4"	1	--	
CT-1042	CT-1042	DT-1	3'-0"	7'-0"	PT	WD	FT-1	HM	PT	5 3/4"	1	--	
CT-1043	CT-1043	DT-1	3'-0"	7'-0"	PT	WD	FT-1	HM	PT	5 3/4"	1	--	
CT-1044A	CT-1044	DT-1	3'-0"	7'-0"	PT	WD	FT-2	HM	PT	5 3/4"	4	--	
CT-1046	CT-1046	DT-1	3'-0"	7'-0"	PT	WD	FT-1	HM	PT	5 3/4"	1	--	
CT-1047	CT-1047	DT-1	3'-0"	7'-0"	PT	WD	FT-1	HM	PT	5 3/4"	3	--	
CT-1047A	CT-1047	DT-1	3'-0"	7'-0"	PT	WD	FT-1	HM	PT	5 3/4"	3	--	
CT-1050	CT-1050	DT-1	3'-0"	7'-0"	PT	WD	FT-2	HM	PT	5 3/4"	1	--	

- ABBREVIATIONS:
- ALUM - ALUMINUM
  - CAMFA - CLEAR ANODIZED MILL FINISH ALUMINUM
  - EXIST - EXISTING
  - FF - FINISH FLOOR
  - GALV - GALVANIZED
  - HM - HOLLOW METAL
  - PR - PAIR
  - PT - PAINT
  - STN - STAIN
  - STL - STEEL

**C3 DOOR SCHEDULE**  
SCALE: NOT TO SCALE



**B4 DOOR AND FRAME TYPES**  
SCALE: NOT TO SCALE

**C&S COMPANIES**  
C&S Architects, Engineers & Landscape Architect, PLLC.  
499 Col. Eileen Collins Blvd.  
Syracuse, New York 13212  
Phone: 315-455-2000  
Fax: 315-455-9667  
www.cscos.com



**SRAA OFFICE EXPANSION  
SYRACUSE HANCOCK INTERNATIONAL AIRPORT  
1000 COL EILEEN COLLINS BLVD  
SYRACUSE, NEW YORK 13212**

MARK	DATE	DESCRIPTION

REVISIONS

PROJECT NO:	068.055.001
DATE:	NOVEMBER 19, 2021
DRAWN BY:	K.B. PUGH
DESIGNED BY:	K.B. PUGH
CHECKED BY:	M.W. LAMONTAGNE

NO ALTERATION PERMITTED HEREON EXCEPT AS PROVIDED UNDER SECTION 7209 SUBDIVISION 2 OF THE NEW YORK EDUCATION LAW

SCHEDULES

A-601